

# Service Manual

**Canon Color**

**Color Network UFR Printer Kit-C1**

**Canon**

Mar 18 2004



## Application

This manual has been issued by Canon Inc. for qualified persons to learn technical theory, installation, maintenance, and repair of products. This manual covers all localities where the products are sold. For this reason, there may be information in this manual that does not apply to your locality.

## Corrections

This manual may contain technical inaccuracies or typographical errors due to improvements or changes in products. When changes occur in applicable products or in the contents of this manual, Canon will release technical information as the need arises. In the event of major changes in the contents of this manual over a long or short period, Canon will issue a new edition of this manual.

The following paragraph does not apply to any countries where such provisions are inconsistent with local law.

## Trademarks

The product names and company names used in this manual are the registered trademarks of the individual companies.

## Copyright

This manual is copyrighted with all rights reserved. Under the copyright laws, this manual may not be copied, reproduced or translated into another language, in whole or in part, without the written consent of Canon Inc.

***COPYRIGHT © 2001 CANON INC.***

*Printed in Japan*

## Caution










Use of this manual should be strictly supervised to avoid disclosure of confidential information.

---

## Symbols Used

---



This documentation uses the following symbols to indicate special information:

Symbol	Description
	Indicates an item of a non-specific nature, possibly classified as Note, Caution, or Warning.
	Indicates an item requiring care to avoid electric shocks.
	Indicates an item requiring care to avoid combustion (fire).
	Indicates an item prohibiting disassembly to avoid electric shocks or problems.
	Indicates an item requiring disconnection of the power plug from the electric outlet.
 Memo	Indicates an item intended to provide notes assisting the understanding of the topic in question.
 REF.	Indicates an item of reference assisting the understanding of the topic in question.
	Provides a description of a service mode.
	Provides a description of the nature of an error indication.



The following rules apply throughout this Service Manual:

1. Each chapter contains sections explaining the purpose of specific functions and the relationship between electrical and mechanical systems with reference to the timing of operation.

In the diagrams,  represents the path of mechanical drive; where a signal name accompanies the symbol, the arrow  indicates the direction of the electric signal.

The expression "turn on the power" means flipping on the power switch, closing the front door, and closing the delivery unit door, which results in supplying the machine with power.

2. In the digital circuits, '1' is used to indicate that the voltage level of a given signal is "High", while '0' is used to indicate "Low". (The voltage value, however, differs from circuit to circuit.) In addition, the asterisk (\*) as in "DRMD\*" indicates that the DRMD signal goes on when '0'.

In practically all cases, the internal mechanisms of a microprocessor cannot be checked in the field. Therefore, the operations of the microprocessors used in the machines are not discussed: they are explained in terms of from sensors to the input of the DC controller PCB and from the output of the DC controller PCB to the loads.

The descriptions in this Service Manual are subject to change without notice for product improvement or other purposes, and major changes will be communicated in the form of Service Information bulletins.

All service persons are expected to have a good understanding of the contents of this Service Manual and all relevant Service Information bulletins and be able to identify and isolate faults in the machine."



---

---

# Contents

## Chapter 1 Specifications

1.1 Product composition .....	1- 1
1.1.1 Product Composition .....	1- 1
1.2 Specifications .....	1- 2
1.2.1 Specifications .....	1- 2

## Chapter 2 Functions

2.1 New Function .....	2- 1
2.1.1 Flow of Image Data .....	2- 1
2.1.2 Image Processing .....	2- 1
2.1.3 Canon Driver Information Assist Service (DIAS) .....	2- 4
2.1.4 FTP Printing .....	2- 6

## Chapter 3 Installation

3.1 Points to Note About Installation .....	3- 1
3.1.1 Points to Note About Installation .....	3- 1
3.2 UFR Setup Guide for WinXP .....	3- 2
3.2.1 Overview .....	3- 2
3.2.2 Items to Prepare and Points to Note .....	3- 2
3.2.3 Connecting the Network Cable .....	3- 2
3.2.4 Collecting Information Before Making Settings .....	3- 3
3.2.5 Installing the Printer Drivers .....	3- 9
3.2.6 Difference Between LPR Port and Standard TCP/IP Port .....	3- 21
3.2.7 Installing the LPR Port (UNIX Print service) Components .....	3- 21
3.2.8 Canon LPR2 .....	3- 29
3.2.9 Installing Canon LPR2 .....	3- 31
3.2.10 Useful Operations .....	3- 41
3.2.11 Switching Between RAW and LPR .....	3- 45
3.2.12 Remedy for Faults Caused by the Environment (30 client PCs or more) .....	3- 47
3.3 UFR Setup Guide for Win9x .....	3- 49
3.3.1 Overview .....	3- 49
3.3.2 Items to Prepare and Points to Note .....	3- 49
3.3.3 Connecting the Network Cable .....	3- 49
3.3.4 Collecting Information Before Making Settings (on the side of the iR C6800) .....	3- 50
3.3.5 Collecting Information Before Making the Settings (on the Windows PC side) .....	3- 52
3.3.6 Making Settings Without Using Automatic Execution (CD-ROM) .....	3- 55
3.3.7 Canon LPR2 .....	3- 59
3.3.8 Installing Canon LPR2 .....	3- 60
3.3.9 Installing Printer Drivers (LPR connection) .....	3- 66
3.3.10 Useful Operations .....	3- 76

## Chapter 4 Maintenance

4.1 Notes when service .....	4- 1
4.1.1Points to Note .....	4- 1

---

# Chapter 1 Specifications

---



# Contents

1.1 Product composition.....	1-1
1.1.1 Product Composition .....	1-1
1.2 Specifications .....	1-2
1.2.1 Specifications .....	1-2





## 1.1 Product composition

---

### 1.1.1 Product Composition

0006-2694

The Kit consists of the following components.

- UFR board
- PDL Boot ROM
- User Software CD-ROM
- Color Network ScanGear CD-ROM
- User Manual CD-ROM

## 1.2 Specifications

### 1.2.1 Specifications

0006-2695

The main specifications and features of the kit are as shown below.

**<Characteristics>**

- printing is virtually immediate
- output is close to screen display

T-1-1

**Specifications**

Mode		full color, mono-color
Data processing resolution		600 dpi
Effective print area	UFR/PS	main scanning direction: 4.0mm
		sub scanning direction: 4.0mm
	PCL	main scanning direction: 4.23mm
		sub scanning direction: 4.23mm
Supported operating systems		Windows 2000 Professional/Server/Advanced Server
		Windows XP Home Edition/Professional
		Windows Server 2003 Standard Edition/Enterprise Edition
		Windows 98/98SE/ME
Paper size		default papers

T-1-2

[ UFR /PS ]

Paper size	Dimensions( heightxwidth [area in mm]	Effective print area (heightxwidth h) [area in mm]	Effective print area[area in mm2]	Margin [area in mm]			
				(Left)	(Upper )	(Right)	(Lower )
A3	420X297	412X289	119,068	4.0	4.0	4.0	4.0
A4	210X297	202X289	58,378	4.0	4.0	4.0	4.0
B4	364X257	356X249	88,644	4.0	4.0	4.0	4.0
B5	182X257	174X249	43,326	4.0	4.0	4.0	4.0
A5	148X210	140X202	28,280	4.0	4.0	4.0	4.0
11"x17 "	432X279	424X271	114,904	4.0	4.0	4.0	4.0
LGL	356X216	348X208	72,384	4.0	4.0	4.0	4.0
LTR	216X279	208X271	56,368	4.0	4.0	4.0	4.0
LTRR	279X216	271X208	56,368	4.0	4.0	4.0	4.0
STMT R	216X140	208X132	27,456	4.0	4.0	4.0	4.0
STMT	140X216	132X208	27,456	4.0	4.0	4.0	4.0
SRA3	450X320	442X312	137,904	4.0	4.0	4.0	4.0
12"x18 "	457X305	449X297	133,353	4.0	4.0	4.0	4.0
EXEC	184X267	176X259	45,584	4.0	4.0	4.0	4.0
COM1 0	241.3X104.7	233.3X96.7	22,560	4.0	4.0	4.0	4.0
Monar ch	190.5X98.4	182.5X90.4	16,498	4.0	4.0	4.0	4.0
ISO- C5	229X162	221X154	34,034	4.0	4.0	4.0	4.0
ISO- B5	250X176	242X168	40,656	4.0	4.0	4.0	4.0
DL	220X110	212X102	21,624	4.0	4.0	4.0	4.0

T-1-3

[ PCL ]

Paper size	Dimensions (heightxwidth) [area in mm]	Effective print area (heightxwidth) [area in mm]	Effective print area [area in mm <sup>2</sup> ]	Margin [area in mm]			
				(Left)	(Upper)	(Right)	(Lower)
A3	420X297	411.54X288.54	118,746	4.23	4.23	4.23	4.23
A4	210X297	201.54X288.54	58,154	4.23	4.23	4.23	4.23
B4	364X257	355.54X248.54	88,366	4.23	4.23	4.23	4.23
B5	182X257	173.54X248.54	43,132	4.23	4.23	4.23	4.23
A5	148X210	139.54X201.54	28,123	4.23	4.23	4.23	4.23
11"x17"	432X279	423.54X270.54	114,585	4.23	4.23	4.23	4.23
LGL	356X216	347.54X207.54	72,128	4.23	4.23	4.23	4.23
LTR	216X279	207.54X270.54	56,148	4.23	4.23	4.23	4.23
LTRR	279X216	270.54X207.54	56,175	4.23	4.23	4.23	4.23
STMT R	216X140	207.54X131.54	27,300	4.23	4.23	4.23	4.23
STMT	140X216	131.54X207.54	27,300	4.23	4.23	4.23	4.23
SRA3	450X320	441.54X311.54	137,558	4.23	4.23	4.23	4.23
12"x18"	457X305	448.54X296.54	133,011	4.23	4.23	4.23	4.23
EXEC	184X267	175.54X258.54	45,384	4.23	4.23	4.23	4.23
COM1 0	241.3X104. 7	232.84X96.24	22,409	4.23	4.23	4.23	4.23
Monar ch	190.5X98.4	182.04X89.94	16,373	4.23	4.23	4.23	4.23
ISO- C5	229X162	220.54X153.54	33,862	4.23	4.23	4.23	4.23
ISO- B5	250X176	241.54X167.54	40,468	4.23	4.23	4.23	4.23
DL	220X110	211.54X101.54	21,471	4.23	4.23	4.23	4.23

## Non-default paper

### T-1-4

#### User-defined paper

UFR/PS/PCL	minimum	99.00×140.00 (13,860)
	maximum	308.00×407.00 (125,356)

Note:

The value in parentheses indicates the area in mm<sup>2</sup>.

- The height and width can be specified by 1/10 mm(Except US)or 1/100 inch(US).

- The height must be equal to or greater than width.

## Area-Specific Paper Sizes

In addition to default paper sizes (A4/LTR) and user-defined paper sizes, the printer driver supports area-specific paper sizes (e.g., Officio), and it handles these area-specific paper sizes as user-defined paper sizes, requiring the user to register them in advance of use. To do so, see the instructions on registering user-defined paper sizes for individual operating systems.

When an area-specific paper size is manually set up under [Form to Tray Assignment] of the driver UI, or if the size obtained by running dynamic configuration happens to be an area-specific paper size, the driver operates in the corresponding mode. After performing all associated internal operations, the driver runs a check of area-specific paper sizes stored as user defined paper sizes, and handles any matching paper as a default paper size (special paper ID) instead of as a user-defined paper size. Moreover, the driver permits registration of multiple area-specific paper sizes, treating them as a separate paper group. The driver UI handles them using specifications designed for LTR paper, permitting the use of finisher functions, which were previously offered for user-defined paper sizes (except the use of the middle binding function). Although it will permit all settings, the printer unit may ignore some of the settings. (The printer driver will simply ignore them, not issuing conflicts.)

### T-1-5

Paper size		Dimensions	
		Feed direction	Width
Government Letter	G_LGR	203.0	267.0
Government LetterR	G_LGL	330.0	203.0
Foolscap	FLSP	330.0	216.0
Oficio	OFI	317.0	216.0

Paper size		Dimensions	
		Feed direction	Width
Folio	FOLIO	330.0	210.0
Ecuadorian Officio	E_OFI	320.0	220.0
Aegentine Officio	A_OFI	340.0	220.0
Australian Foolscap	A_FLSP	337.0	206.0
Argentine Letter	A_LTR	220.0	280.0
Bolivian Officio	B_OFI	355.0	216.0
Mexican Officio	M_OFI	341.0	216.0

**In dot conversion, roundness errors sometimes occur.**

- The device font cannot be used.

    Because of the image driver, the device font is not used.

- GDI raster fonts cannot be used.

    1 byte fonts: Courier, MS Sans Serif, MS Serif, etc.

    2 byte fonts: FixedSys, System, Small Fonts, Terminal, etc.

- GDI vector fonts can be used.

    1 byte fonts: Modern, Roman, Script, etc.

- True Type fonts can be used.

    1 byte fonts: Arial, Courier New, Symbol, Times New Roman, etc.

    2 byte fonts: MS Mincho, MS Gothic, etc.

- WIFE fonts can be used.

    1 byte fonts: \$JS Mincho, \$JS Gothic, etc.

    2 byte fonts: JS MIncho, JS Gothic, etc.

---

# Chapter 2    Functions

---





# Contents

2.1 New Function .....	2-1
2.1.1 Flow of Image Data .....	2-1
2.1.2 Image Processing .....	2-1
2.1.3 Canon Driver Information Assist Service (DIAS) .....	2-4
2.1.4 FTP Printing .....	2-6



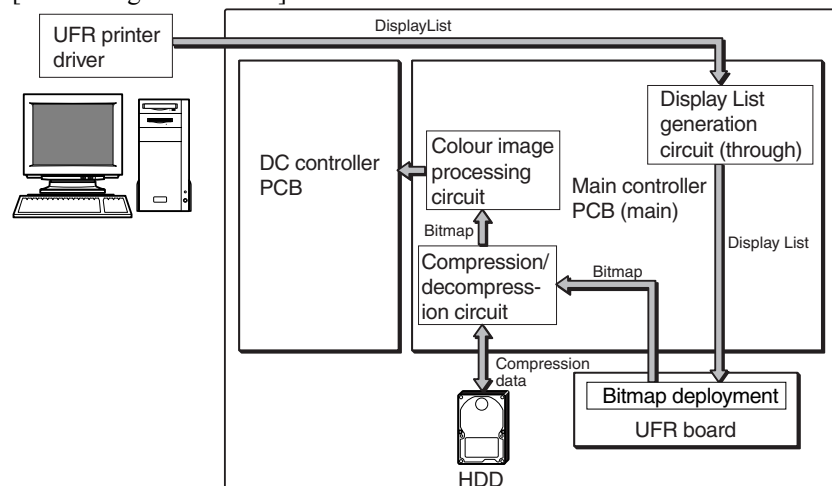
## 2.1 New Function

### 2.1.1 Flow of Image Data

0006-2687

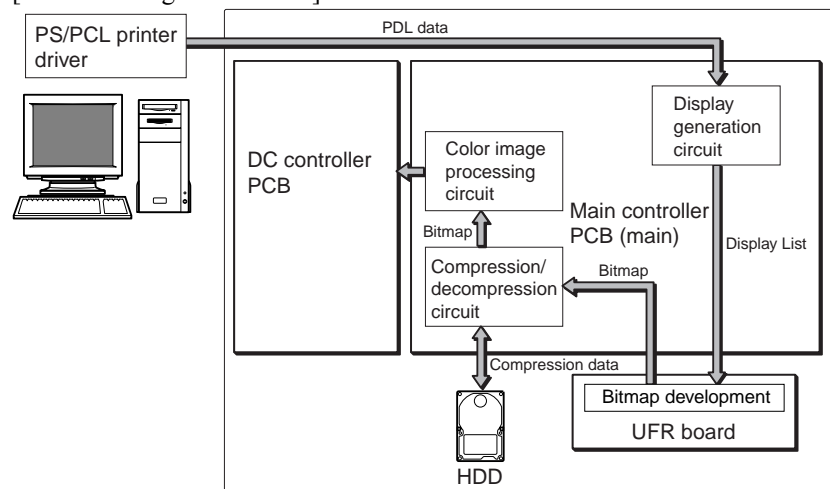
The following is a diagram showing the flow of image data:

[ UFR Image Data Flow ]



F-2-1

[ PS/PCL Image Data Flow ]



F-2-2

### 2.1.2 Image Processing

0006-2688

<UFR>

#### Printing purpose

The image is processed and printed according to the printing purpose. (Text, Photo, DTP, Graphics, CAD)

**Toner saving**

Set whether to save toner by reducing the amount of toner used.

**Super smooth**

Allows setting of whether to use Super Smoothing Technology.

**Gradation settings**

Allows setting of whether to use gradation smoothing. When gradation smoothing is set, colour gradation is printed very smoothly.

**<PCL>****Gray Compensation**

If R=G=B, determines whether or not to print objects in K monochrome (including text, graphics, images).

If gray compensation has been selected for an object (i.e., by enabling gray compensation), the object will be printed in K monochrome if R=G=B. If gray compensation has not been selected (i.e., by disabling gray compensation), the object will be printed in CMYK even when R=G=B.

**Halftone**

Halftone may be selected for any object of text, graphics, or image.

**Save Toner**

The amount of toner to be used may be reduced to save on its consumption.

**Super Smooth**

The use of the Super Smooth Technology may be enabled or disabled. Use it for smoother reproduction of characters or lines drawn at angles.

**Gradation**

Gradation smoothing may be enabled or disabled.

**Toner Density**

For CMYK, the density of toner may be specified individually.

**<PS>****Color Mode**

A page may be printed in color or monochrome.

**Monochrome**

Use it to print a page in monochrome. If the PDL input is color data, it will be converted to gray data as part of PDL processing, turning out a monochrome page. The charging will be for a monochrome print.

### Full Color

Use it to print a page in full color. However, gray data will print as a monochrome print.

Moreover, color data will print as a monochrome page if it consists of objects for which gray compensation has been selected and if it is R=G=B. Otherwise, printing will be of a color page even if all its objects are monochrome. The charging will be for a color print.

### Auto Switchover

If all objects of a page are gray data, internal identification will turn on monochrome operations([print mode]); otherwise, full color operations will be turned on.

### RGB Source Profile

This setting allows you to define the characteristics RGB profile (color data represented using the RGB (Red, Green, and Blue) color model) used when printing color images or graphics in a document. This ensures that the machine uses the most appropriate color conversion when printing color documents using the CMYK color model.

### Rendering Style

#### CMYK Simulation Profile

This setting allows you to change the simulation target for the current job. When the machine processes the job, the simulation target selected in CMYK Simulation Profile is applied before the job is printed using the CMYK (Cyan, Magenta, Yellow, and Key (black) color model).

#### Matching Method

This setting allows you to select a default color rendering dictionary (CRD) to be used when printing RGB images and text. A CRD is used by the color management system to ensure the best possible translation when the machine converts data between color models. This machine includes several CRDs that provide different color rendering styles.

#### Pure Black Text/Graphics

#### Black Overprint

When printing black text in combination with a color background or graphics, the text can be printed in one of two ways: either as part of the color background, or not. This setting allows you to choose a specific way to print black text for such a job.

#### Output Profile

This setting allows you to define the Output Profile. It is applied to all data in the print job, so make sure the selected profile is right for your job.

#### Brightness

This setting adjusts the brightness of the overall image.

### **Half Tone**

This setting enables you to apply the following patterns to Text, Graphics, and Image data.

Halftoning is used to print each process color at a different intensity, allowing millions of different colors to be reproduced using only the four process colors. Depending on the required intensity of a given color, toner is placed on paper in dots of different sizes. The grid of dots used for each toner color is called a screen. Halftone screens are aligned to unique angles designed to eliminate interference patterns called moire (a shimmering, wavy effect) that can arise with halftoning.

### **Save Toner**

The amount of toner to be used may be reduced to save on its consumption.

### **Super Smooth**

The use of the Super Smooth Technology may be enabled or disabled. Use it for smother reproduction of characters or lines drawn at angles.

### **Gradation**

Gradation smoothing may be enabled or disabled.

## **2.1.3 Canon Driver Information Assist Service (DIAS)**

0006-2691

This is a subset version of the Netspot Suite Service, supporting Driver only: we have selected Driver's functions (mainly, the functions to acquire Device configuration information) and redesigned them. The DIAS has the following functions:

- To acquire Device configuration information (acquisition when setting up Printer Property.)
- To acquire calibration information (acquisition when setting up Printer Property and printing by the color LBP, Color iR, and etc.)
- To make recognition in department-control printing (communication when setting up Printer Property or when making a department-control print)

### **Main structure of DIAS**

DIAS (DLL): It is a module loaded on Driver

DIAS (Service): It does a service of installation on printer server when using a shared printer (resident process)

CBT: It is a module group to control a local port, such as Centronics Cable or USB

H-VDC: It is a module group which are needed for the driver function in DIAS.

### **Characteristics of DIAS**

- Local printer can acquire the configuration information in DIAS (DLL) only.

Local printer means a printer that is "Peer to Peer" connected with Local PC via LPR/IPP/Centronics Cable/USB and that Spooler (Print queue) appears on the Local PC.

---

- Shared printer needs to have DIAS (Service) installed on printer server.

The installation of DIAS (Service) must be done via Driver installer.

Shared printer means a printer whose Spooler (Print queue) appears on the printer server (Remote PC).

- However, in some cases, DIAS (Service) needs to be installed for Local Port connection. (See "Help" > "Troubleshoot the acquisition of configuration information".

1, WinNT4.0 OS Family (All)/ At the time of Local Port connection (LPT)

2, Win2k Server OS Family (Except Professional)/At the time of Local Port connection (LPT/USB) and Terminal Service introduction

3, WinXP Home/Professional Edition/ServerOS 2003 Family (X86:All)/ At the time of Local Port connection (LPT/USB) and Terminal Service introduction

### **About the version indication**

The same Driver version indication as the one via Netspot Suite Service appears only when communicating with Device via DIAS (Service) (i.e., when connected through a shared printer).

### **Compatibility of DIAS and Netspot Suite Service**

DIAS and Netspot Suite Service are compatible and independent. Driver supporting DIAS does not use Netspot Suite Service even if it is installed.

### **Cautions when using DIAS**

CBT controls all access to Local Port; both DIAS (DLL/Service) and NetSpot Suite Service use CBT to access Local Port from the same PC.

CBT was installed only on Netspot Suite Service before; it is automatically uninstalled in response to uninstalling the existing NetSpot Suite Service. Follow the procedures below when uninstalling the former versions of NetSpot Suite Service v3.40 and when uninstalling JobMonitor v4.20 and former.

- Reinstall DIAS after the uninstallation is complete. (Reinstallation of DIAS is enabled via Installer.)

- Update NetSpot Suite Service to the latest version (v3.40 and later).

Former versions of NetSpot Suite Service v3.40

PS Printer Driver v2.10 and former

PCL5e Printer Driver v6.11 and former

PCL5c Printer Driver v6.11 and former

PCL6 Printer Driver v6.11 and former

UFR Printer Driver v1.10 and former

JobMonitor v4.10 and former

### **About a file name of the CBT module**

Following files are installed in the 'c:\Windows\system' folder. (For Windows XP/Windows 2000/NT/Server2003, this folder name is to be '%SystemRoot%\system32'.)

AuPort.exe

NBCBTNT.dll / NBCBT95.dll  
NBPORTNT.exe / NBPORT95.exe  
NBLOCALT.dll  
nbcbspt.dat

**Method of confirming when CBT is deleted**

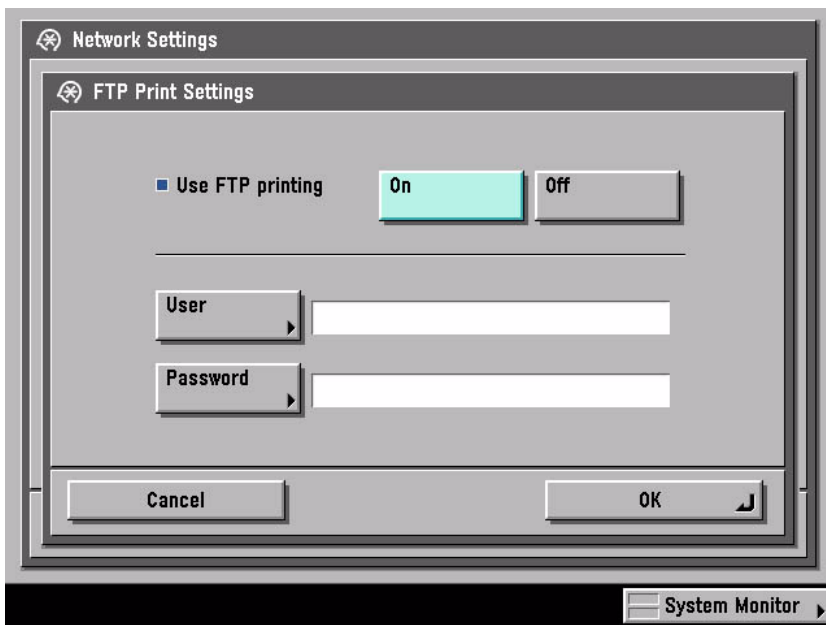
The following message is displayed.

"Failed to obtain device information Make sure no printer error occurred and printout port setting is correct."

**2.1.4 FTP Printing**

0006-2675

This device provides a FTP server for receiving print data. The device can accept print jobs sent in FTP from client PCs. This is called FTP printing, a new feature first employed on iRC 6800. To use this feature, the FTP Print option must be selected. It is selected by default. You can access the option by pressing Ad Func, System Settings, Network Settings, TCP/IP Settings, and FTP Print Settings buttons. In FTP Print Settings screen, only one pair of a user name and password can be entered for the user who can log in to the FTP server. No settings are made for both of the fields by default.



F-2-3

**Commands**

The FTP server complies with the RFC 959 -- File Transfer Protocol -- but provides only printing function. Thus the server does not support other functions required as a RFC 959 compliant server. The commands available for the FTP client are "user," "password," "bin," "put," "bye," "hash," and "help." There is no use of other commands since the server does not provide functions other than printing. The following lists the notes to use the commands.



- To send print data with the command "put," set the mode to the binary mode using the command "bin." In the ascii mode, the data cannot be sent with the command "put."
- If the user and password fields are blank, any user with any password can log in. If the user name "anonymous" is used, any character string can be entered as the password. The device displays the string in User field of Log screen.
- This function is featured mainly to print prn files output from PDL drivers. The device processes text files and the like as it receives data in LPR (and does not properly print depending on settings.) The device of PostScript-compatible model can print PDF files, compatible with PDF V1.3.

The following shows a command specification example, which you will connect the device of the IP address "172.16.181.131" in FTP with the user name "test" and the password "test" and print the file "test.prn" in the root directory of the drive C on the client PC.

```
C:\>ftp 172.16.181.131
Connected to 172.16.181.131.
220 Connection established.
User (172.16.181.131:(none)): test
331 Password required to login.
Password:      Note: The password is not displayed.
230 User test logged in.
ftp> bin
200 Type set to IMAGE (binary).
ftp> put c:\test.prn
200 PORT command successful.
150 Opened BINARY data connection for file transfe
226 Transfer complete.
ftp: 15871 bytes sent in 0.00Seconds 15871000.00Kb
ftp> bye
221 Server closing down connection.
```

```
C:\>
```

### Number of Connections and Used Ports

The maximum number of concurrent connections is three. If a user attempts to connect to the FTP server with which three connections have been established, the user cannot log in and fails in connection. The default port for the FTP server is 21. There is no measure provided to change the port.

The control port time-out is set to 300 seconds. You need to re-connect to the server if you have left the connection for 300 seconds or more after logging in. The data port time-out is 60 minutes. If a data transmission takes more than 60 minutes, the connection is automatically disconnected.



---

# Chapter 3    Installation

---



---

---

# Contents

3.1 Points to Note About Installation .....	3-1
3.1.1 Points to Note About Installation .....	3-1
3.2 UFR Setup Guide for WinXP .....	3-2
3.2.1 Overview .....	3-2
3.2.2 Items to Prepare and Points to Note .....	3-2
3.2.3 Connecting the Network Cable .....	3-2
3.2.4 Collecting Information Before Making Settings .....	3-3
3.2.5 Installing the Printer Drivers .....	3-9
3.2.6 Difference Between LPR Port and Standard TCP/IP Port .....	3-21
3.2.7 Installing the LPR Port (UNIX Print service) Components .....	3-21
3.2.8 Canon LPR2 .....	3-29
3.2.9 Installing Canon LPR2 .....	3-31
3.2.10 Useful Operations .....	3-41
3.2.11 Switching Between RAW and LPR .....	3-45
3.2.12 Remedy for Faults Caused by the Environment (30 client PCs or more) .....	3-47
3.3 UFR Setup Guide for Win9x .....	3-49
3.3.1 Overview .....	3-49
3.3.2 Items to Prepare and Points to Note .....	3-49
3.3.3 Connecting the Network Cable .....	3-49
3.3.4 Collecting Information Before Making Settings (on the side of the iR C6800) .....	3-50
3.3.5 Collecting Information Before Making the Settings (on the Windows PC side) .....	3-52
3.3.6 Making Settings Without Using Automatic Execution (CD-ROM) .....	3-55
3.3.7 Canon LPR2 .....	3-59
3.3.8 Installing Canon LPR2 .....	3-60
3.3.9 Installing Printer Drivers (LPR connection) .....	3-66
3.3.10 Useful Operations .....	3-76



## 3.1 Points to Note About Installation

---

### 3.1.1 Points to Note About Installation

0006-2700

When performing service on this kit in the field, note the following cautions and reference items.

- Make sure that the main unit network settings are completed.
- Make sure that the 'Scan' button is displayed on the main unit control panel.
- Make sure that the printer driver and ScanGear have been installed on the PC.
- When using Netware, the system needs to be changed. For details, refer to the installation procedures.
- After installation, perform 'Automatic gradation correction' from the main unit user mode.

## 3.2 UFR Setup Guide for WinXP

---

### 3.2.1 Overview

0006-2897

The following discussions relate to connection to a network in a Windows XP environment using the UFR printer driver and standard TCP/IP settings:

**UFR is a PDL used to print on an iR C6800 or iR C6800N from a PC.**

- In the case of the iR C6800, this function will become available when a Canon Color Network UFR Printer Kit-C1 (optional) is installed. (The function comes as standard with the iR C6800N.)

**RAW mode is used for printing through port 9100.**

- If the network uses firewall software or uses a router, or it is a WAN or VPN, you must make settings so that port 9100 is valid for use of RAW mode.
- The appropriate settings will automatically be made when printer drivers are installed.

### 3.2.2 Items to Prepare and Points to Note

0006-2898

**You will need the following when installing printer drivers:**

Canon Color Network UFR Printer Kit-C1

(optional for iR C6800; standard for iR C6800N)

- User Software CD-ROM (included with Canon Color Network UFR Printer Kit-C1)

**For more information, see the following documentation that comes with the iR C6800, iR C6800N.**

- iR C6800/C6800N [Reference Guide]
- iR C6800/C6800N [Network Quick Start Guide]
- iR C6800/C6800N [Printer Guide] (Included in [User Manual CD-ROM].)

### 3.2.3 Connecting the Network Cable

0006-2900

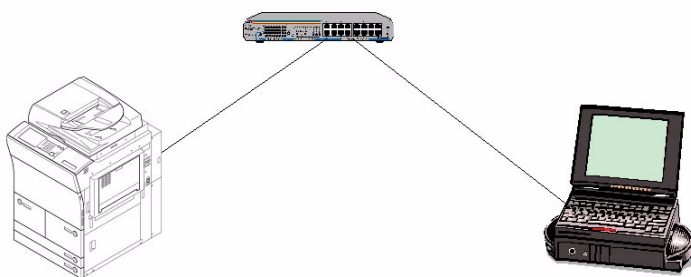
**Connect the network cable.**

<10Base-T/100Base-T>

- Have a LAN cable on hand (straight, for 10Base-T/100Base-T).
- Connect the cable connector to an open port of the HUB.
- Connect the other cable connector to the iR C6800.



## Sample Connection



F-3-1

## 3.2.4 Collecting Information Before Making Settings

0006-2901

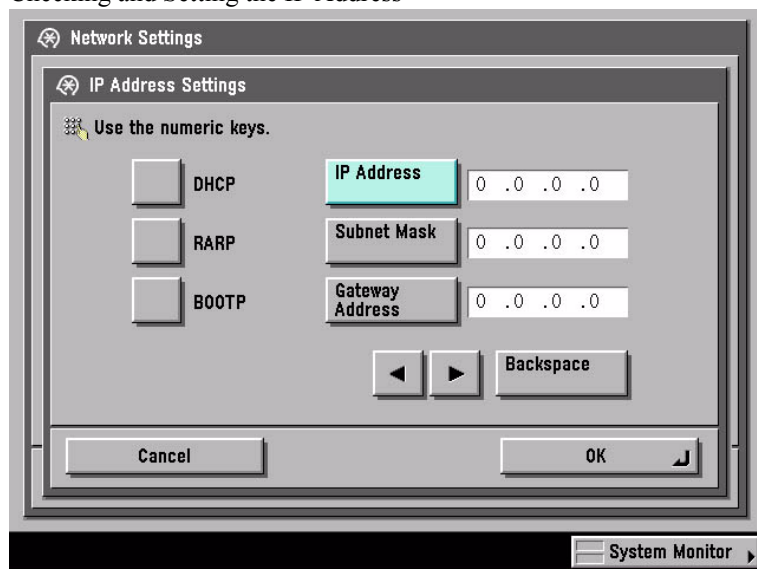
## &lt;iR C6800&gt;

1) Find out the IP address that has been set to the printer:

1. turn on the power.
2. click [Ad Func].
3. click [System Settings].
4. click [Network Settings].
5. click [TCP/IP Settings].
6. click [IP Address Settings].

(When you have found out the IP address, click [Cancel] to end.)

## Checking and Setting the IP Address



F-3-2

2) Use the IP address when setting up the network connection on the PC later.

Check the Settings Made on the iR C6800 by Printing a User Data List

- make the following selections: Ad Func>Report Settings>Network>User's Data List>Yes
- see that a user data list (network) has been printed.

Note:

You can also check the IP address using the printed data list.

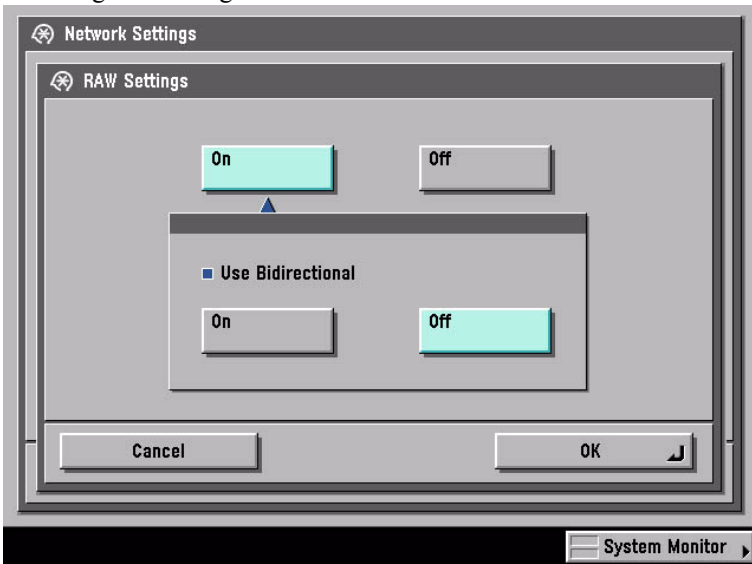
If no IP address has been set, set it on the control panel, and click [OK].

After making the selections, turn off the power, turn off the main power, and then turn on the main power.

3) Obtain the RAW setting of the printer:

1. turn on the power.
  2. click [Ad Func].
  3. click [System Settings].
  4. click [Network Settings].
  5. click [TCP/IP Settings].
  6. click Downward arrow button.
  7. click [RAW Settings].
  8. check to see that the notation is [On].
- (After making the check, click [Cancel] to end.)

#### Checking and Setting RAW



F-3-3

- If the notation of [RAW Settings] was [Off], click [On] then [OK] to change the setting.

Note:

Leave [Use Bidirectional] as it is.

- hen you have changed the settings, turn off the power, turn off the main power, and then turn on the main power.

<Windows PC>

### **Opening Properties for the Network Connection**

#### **Windows XP Display**

##### **standard at install at time of category display**

- start>Control Panel>Network and Internet Connections>Network Connections>any connection name (here, Local Area Connection)>Properties.

##### **Classic Display**

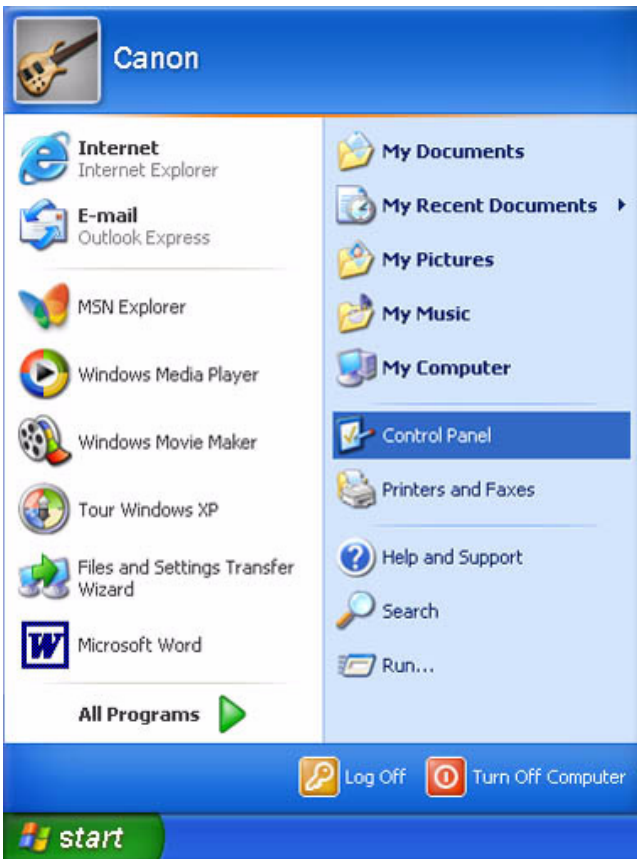
- start>Settings>Control Panel>Network Connection>any connection name (here, Local Area Connection)>Properties

#### **Windows 2000 Display**

- Start>Settings>Control Panel>Network and Dial-up>Connections>Properties

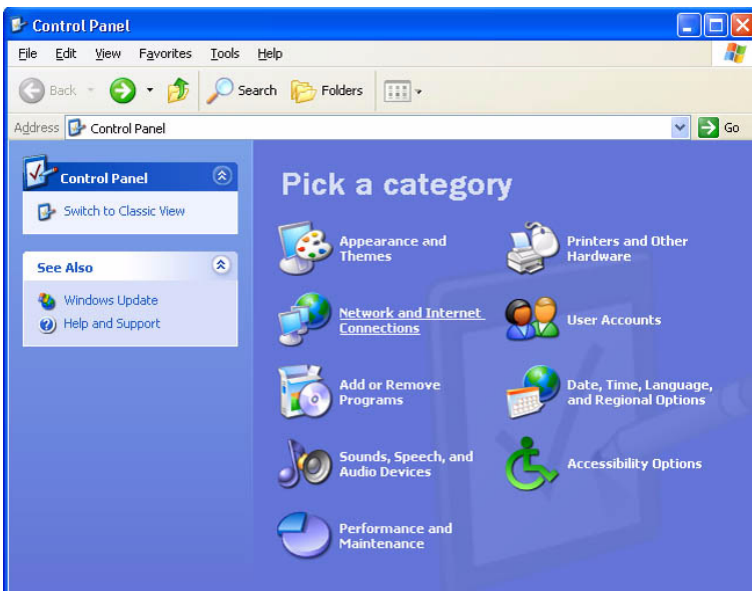
**Check to see that the network interface card name (here, 3com 3C918 Integrated Fast Ethernet Controller (3C905B-TX Compatible)) and TCP/IP are indicated.**

1) Make the following selections: start>Control Panel.



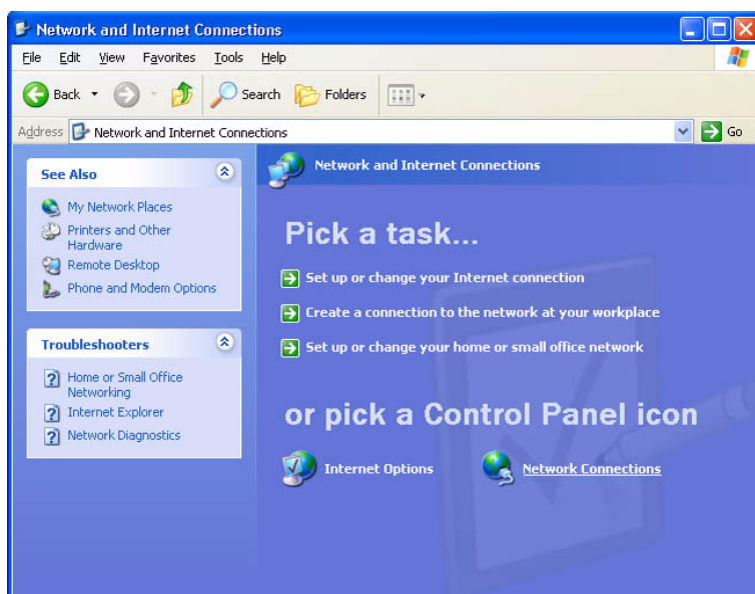
F-3-4

2) Select and click [Network and Internet Connections].



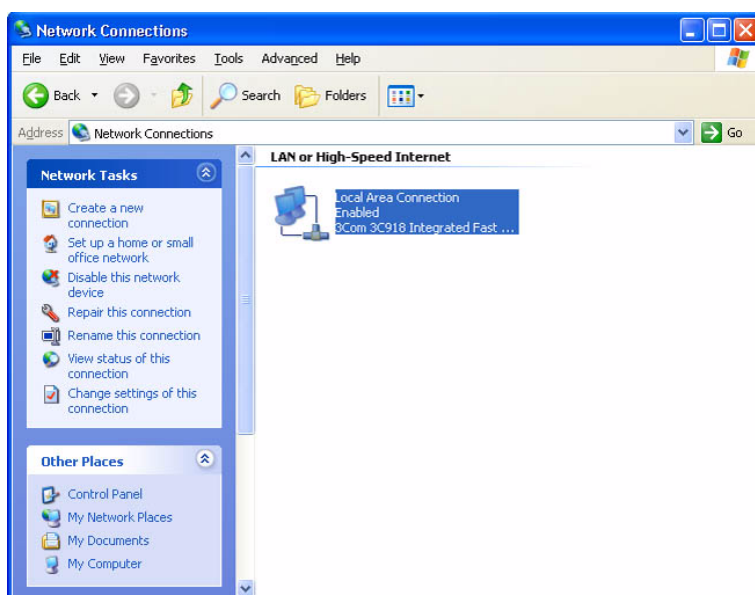
F-3-5

3) Select and click [Network Connections].



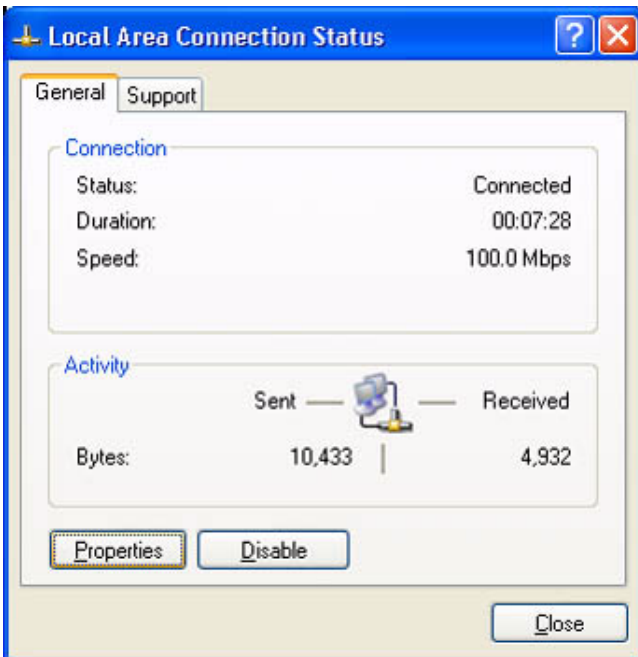
F-3-6

4) Select and double-click [Local Area Connection].



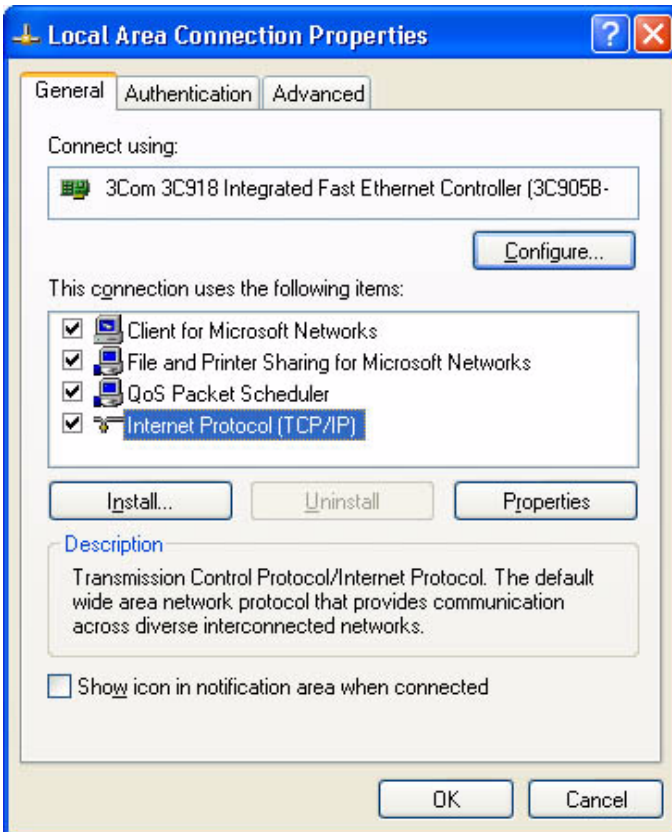
F-3-7

5) Click [Properties].



F-3-8

6) Check the name of the network interface card and TCP-IP.



F-3-9

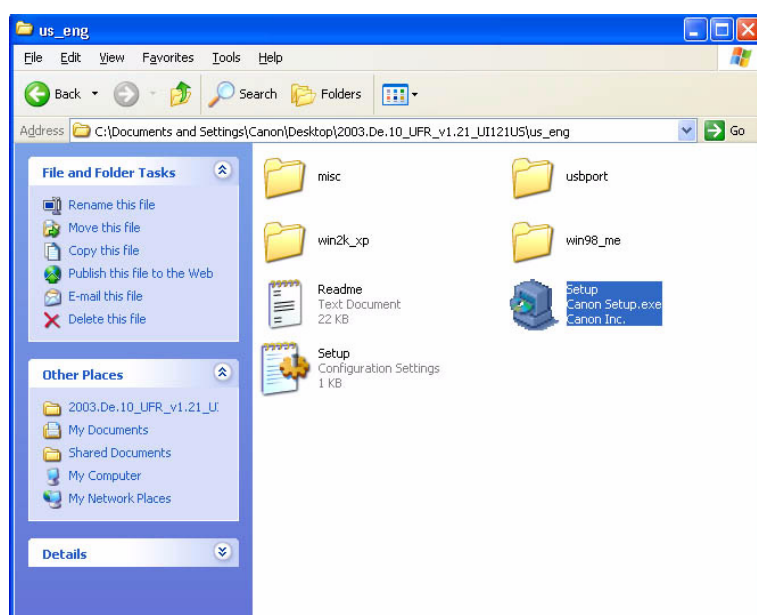
### 3.2.5 Installing the Printer Drivers

0006-2902

- 1) Insert the User Software CD-ROM in the CD-ROM drive. When the UFR CD-ROM Setup screen has appeared, select and click [Install Printer Drivers].

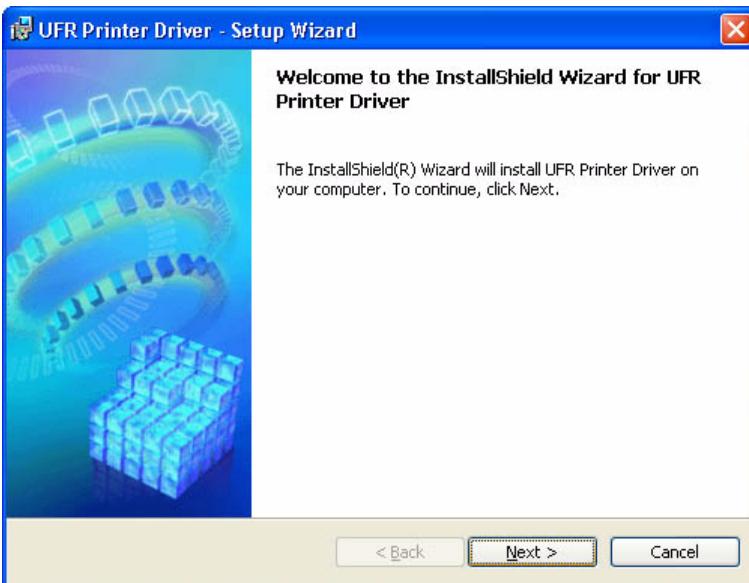
Note:

If the UFR CD-ROM Setup screen does not automatically appear after inserting the User Software CD-ROM in the drive, find the Setup executable, labeled [Setup] or [Setup.exe], and double-click the executable, from the CD-ROM.



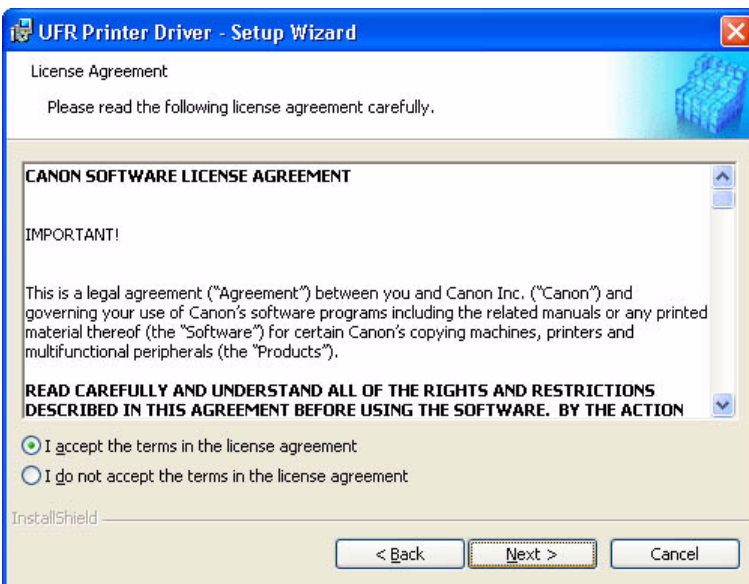
F-3-10

- 2) Click [Next].



F-3-11

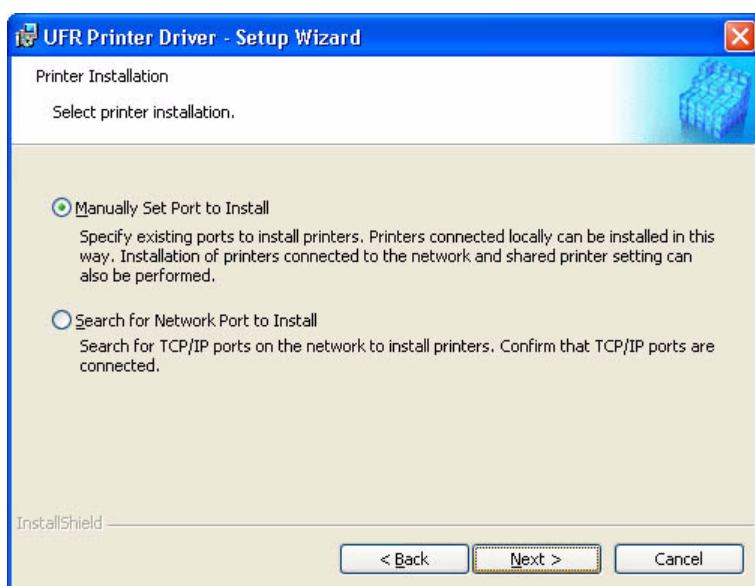
3) Select [I accept the terms in the license agreement], and click [Next].



F-3-12

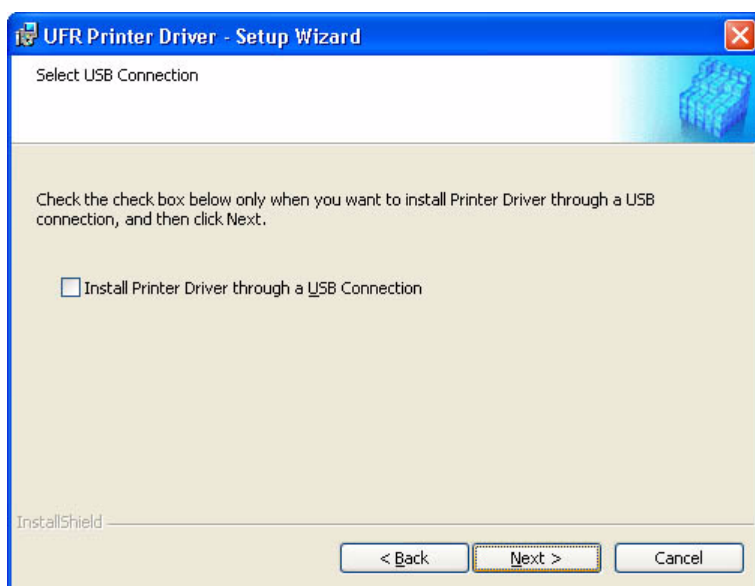
4) Select [Manually Set Port to Install], and click [Next].





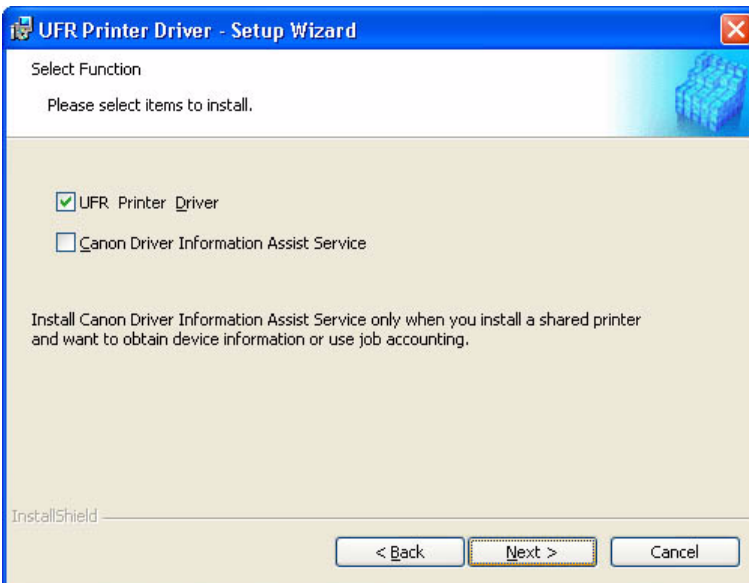
F-3-13

- 5) Check to see that [Install Printer Driver through a USB Connection] is not checked (not selected); then, click [Next].



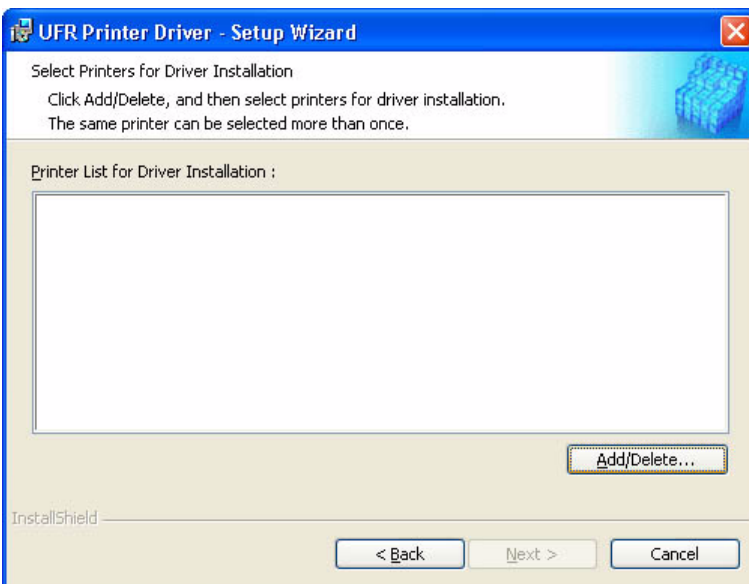
F-3-14

- 6) Check to see that [UFR Printer Driver] is checked (selected); then, click [Next].



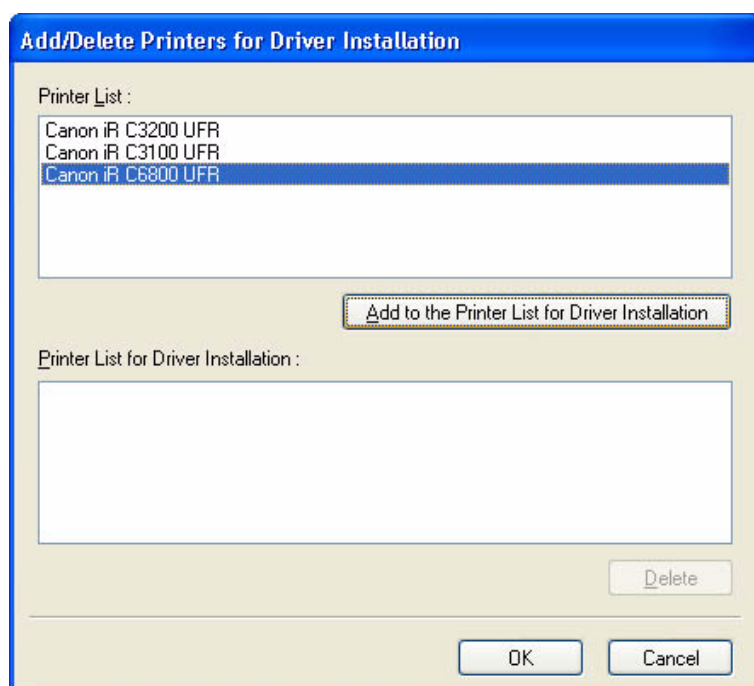
F-3-15

7) Click [Add / Delete].



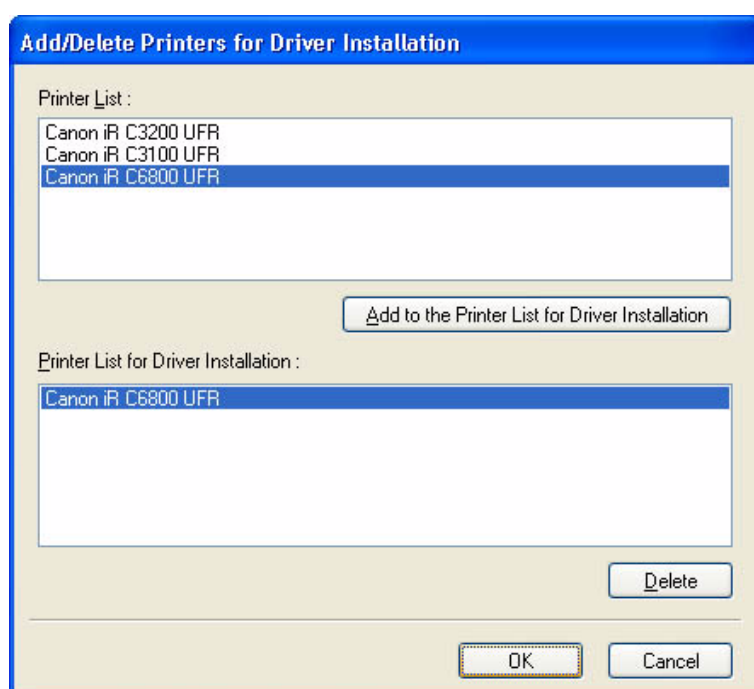
F-3-16

8) Select [Canon iR C6800 UFR]; then, click [Add to the Printer List for Driver Installation].



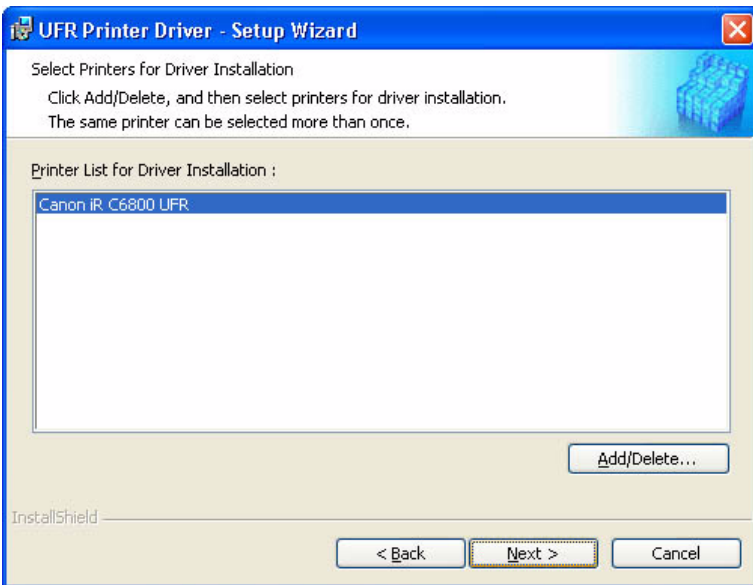
F-3-17

9) Check to see that [Canon iR C6800 UFR] has been added; then, click [OK].



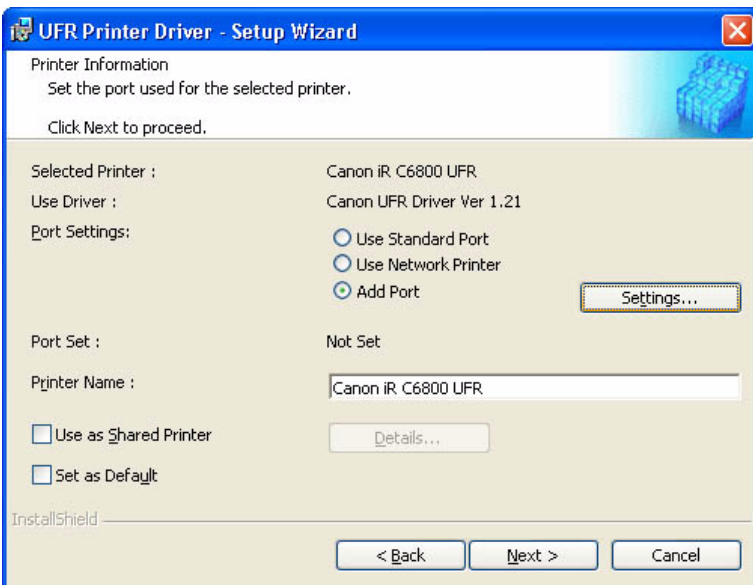
F-3-18

10) Select [Canon iR C6800 UFR], and click [Next].



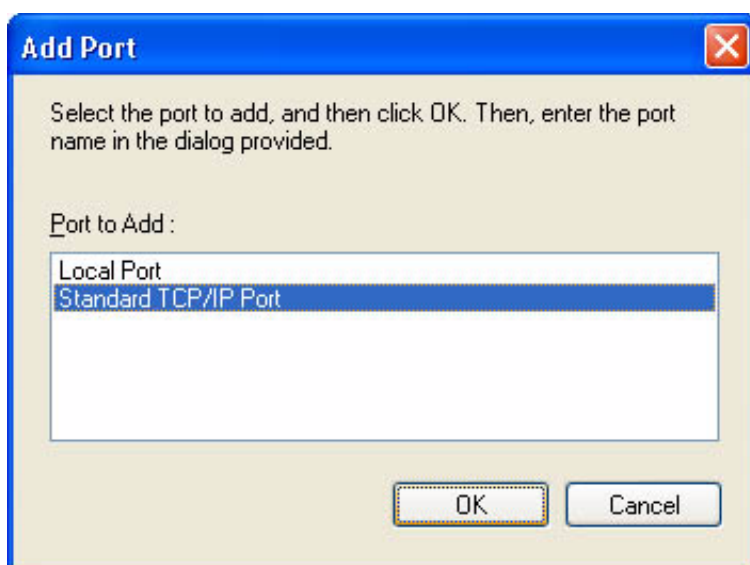
F-3-19

11) Select [Add Port], and click [Settings].



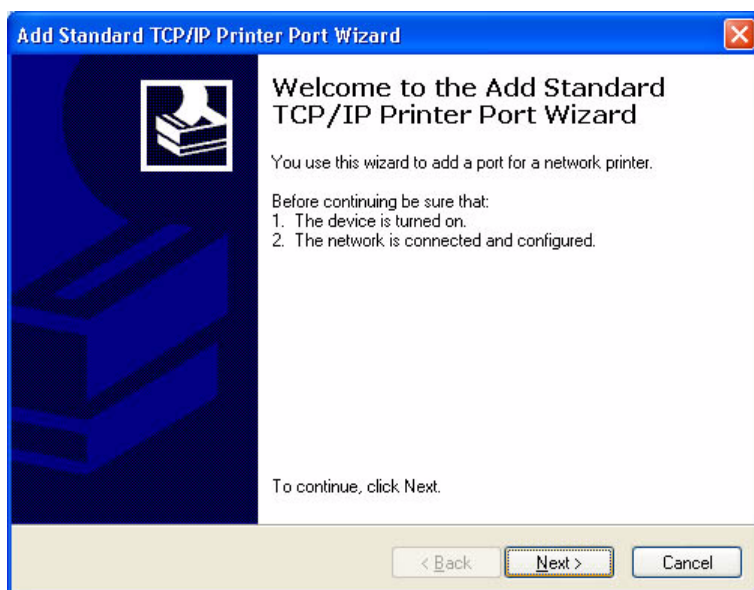
F-3-20

12) Select [Standard TCP/IP Port], and click [OK].



F-3-21

13) See that the Standard TCP/IP Printer Port Install Wizard starts up; then, click [Next].

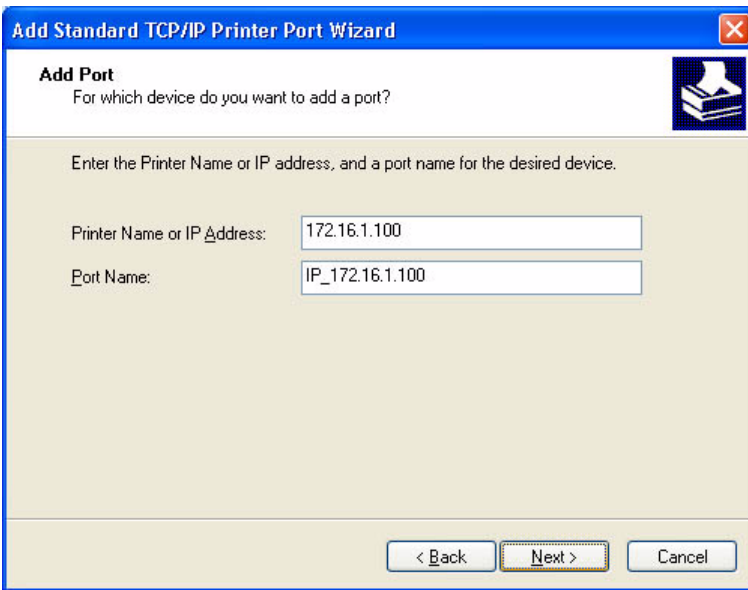


F-3-22

14) Enter the IP address of the iR C6800 for [Printer Name or IP Address]. Use the IP address you found out in the pervious chapter, i.e., "Collecting Information Before Making Settings ," or that is indicated on the printout.

Note:

- By default, the name of the port is "IP\_(IP address)," with the port name filled automatically.
- When you have entered the correct IP address, go to step 16).
- If there is a fault in the network connection, go to step 15). (The screen will appear in response to the presence of a fault.)



F-3-23

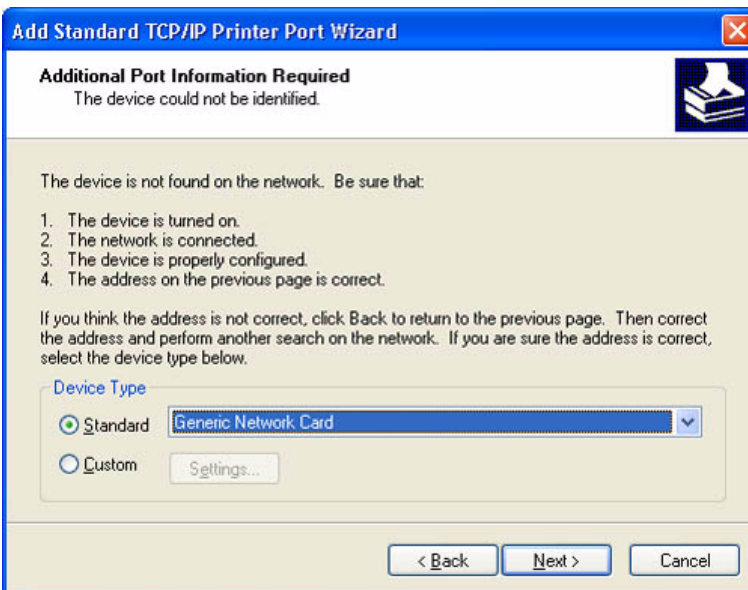
15) If the above screen appears while setting up the standard TCP/IP port,

**Make checks according to the instructions on the screen:**

- check the connection of the cable (on the side of the iR C6800 and PC).
- check to see that the device is on.
- check to see if that IP address is correct.

Note:

In the case of the iR C6800, connection to the network is made in about 1 min.



F-3-24

Check to see if connection is made to the network. (Use PING to check the TCP/IP communication.)

- Make the following selections: start>All Programs>Accessories>Command Prompt.



F-3-25

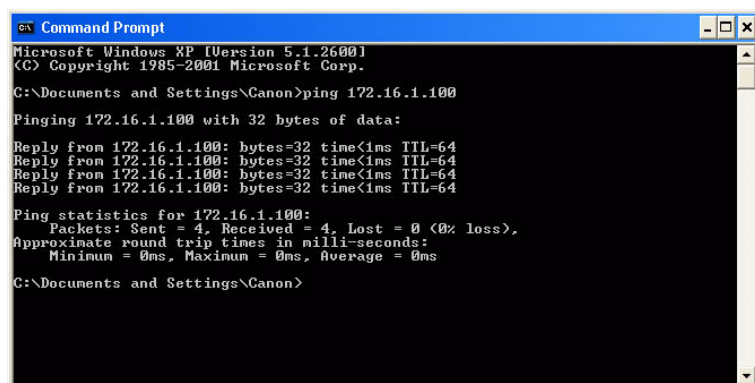
- To check the TCP/IP communication using PING, enter the IP address of the iR C6800 in response to the prompt as follows:

EX:

Type C:\>ping 172.16.1.100; then, press [Enter].

- the connection is correct if the following is indicated: Reply from 172.16.1.100: bytes=32 time<1 ms TTL=64.

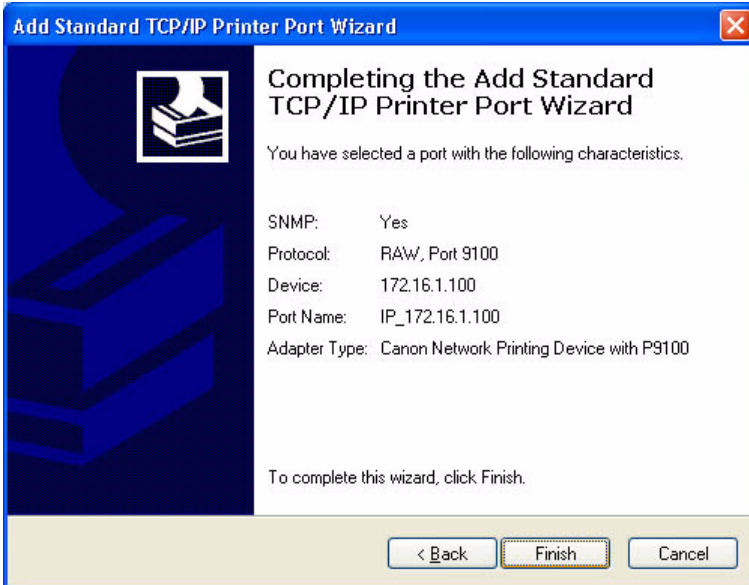
- If a time-out condition occurs, the printer is not responding; check the settings and the cable once again.



F-3-26

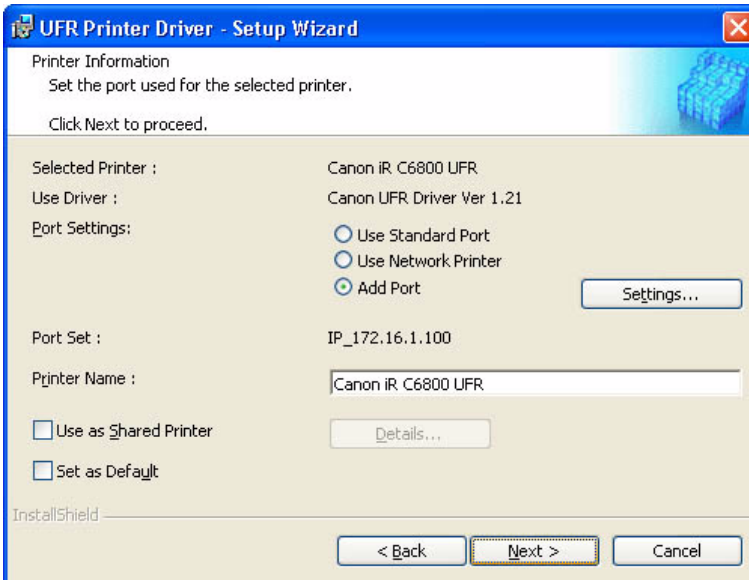
When you have made sure that the network connection is correct, click [Back] to return to step 14) of printer driver installation.

16) When a list has appeared, check that the settings are all correct; then, click [Finish].



F-3-27

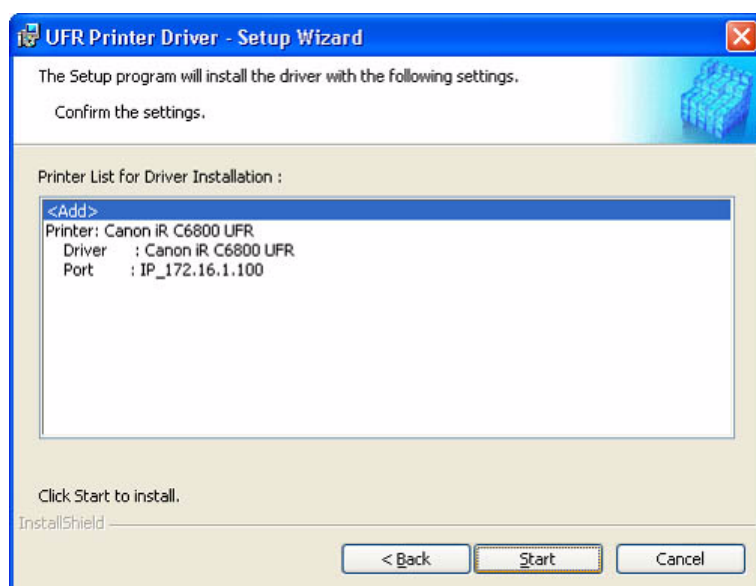
17) Check to see that the port has been set up; then, click [Next].



F-3-28

18) Check the settings; then, click [Start].



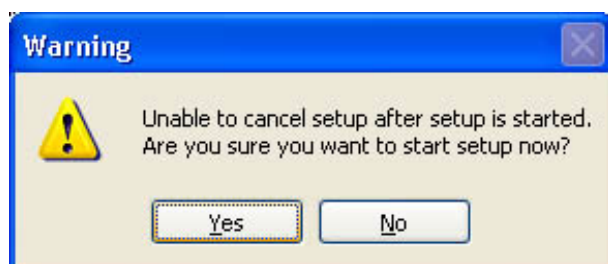


F-3-29

19) Click [Yes].

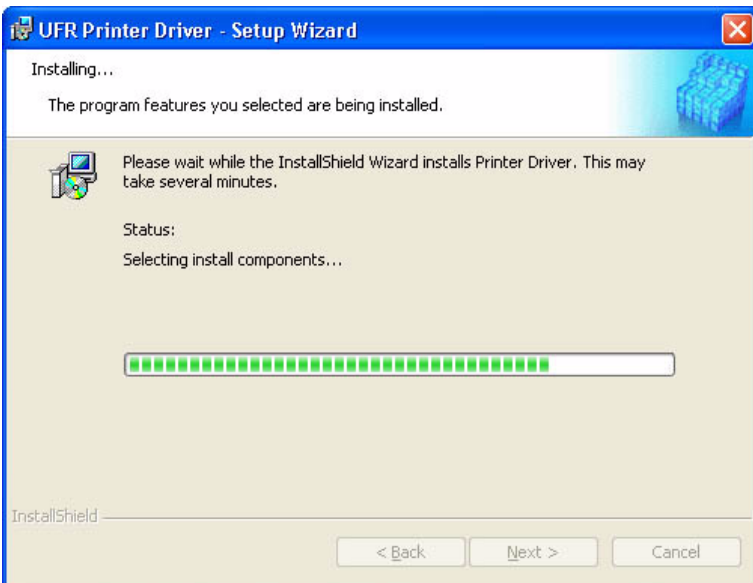
Note:

If you click [No], installation will not start.



F-3-30

20) See that installation starts.



F-3-31

21) When the End of Install screen has appeared, select [Restart my computer now], and click [Exit]. The PC will restart.

Note:

If any other application is running, you may select [Restart my computer later], and click [Exit]. Later, restart the PC manually after ending the application.



F-3-32

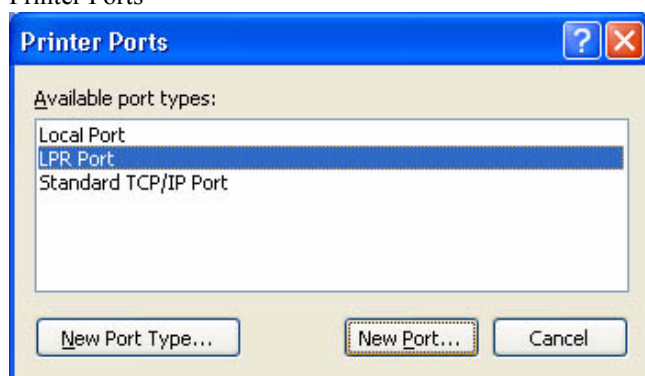
### 3.2.6 Difference Between LPR Port and Standard TCP/IP Port

0006-2903

On the iR C6800, both LPR port and standard TCP/IP port may be used side by side; however, the use of the standard TCP/IP port is recommended for the following reason:

- In the case of the LPR port (OS standard), jobs spooled on the PC will not be sent to the printer (as when about 10 jobs are being printed in succession. In a while, printing will resume, but newly added jobs may be printed, skipping the jobs that have been left out (e.g., resulting in missing sets).
- In the case of the LPR port, additional installation of software is needed.

Printer Ports



F-3-33

### 3.2.7 Installing the LPR Port (UNIX Print service) Components

0006-2904

If the standard TCP/IP port is used, you need not install the LPR port (UNIX print service).

If, because of limits imposed by the user environment, the standard TCP/IP port cannot be used, you may have to select the LPR port (UNIX print service); if such is the case, you need to separately install it, as it does not come as part of the standard installation.

Note:

The discussions herein are based on Windows XP; more or less the same steps may be used for Windows 2000.

- 1) Set the Windows XP CD-ROM in the CD-ROM drive. Select [Install optional Windows components ].

Note:

In the case of Windows 2000, select [Install Add-On Components].

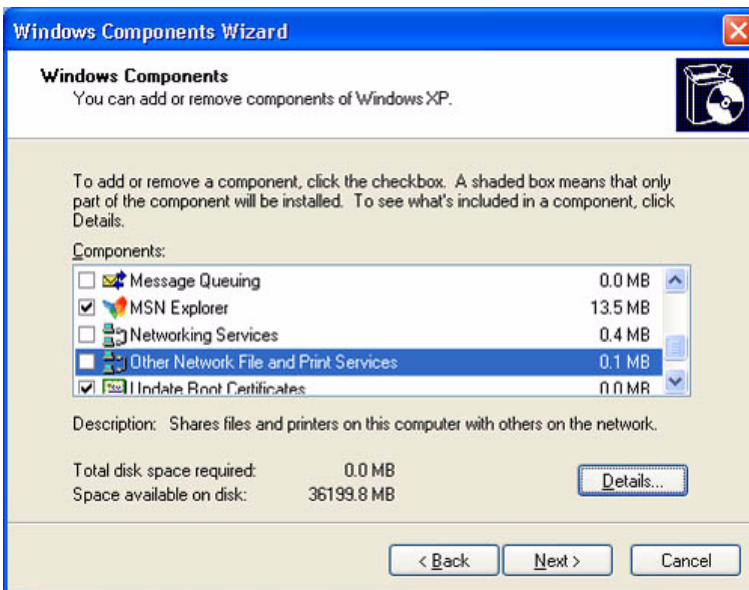


F-3-34

2) Select [Other Network File and Print Services]; then, click [Next] to go to step 4).

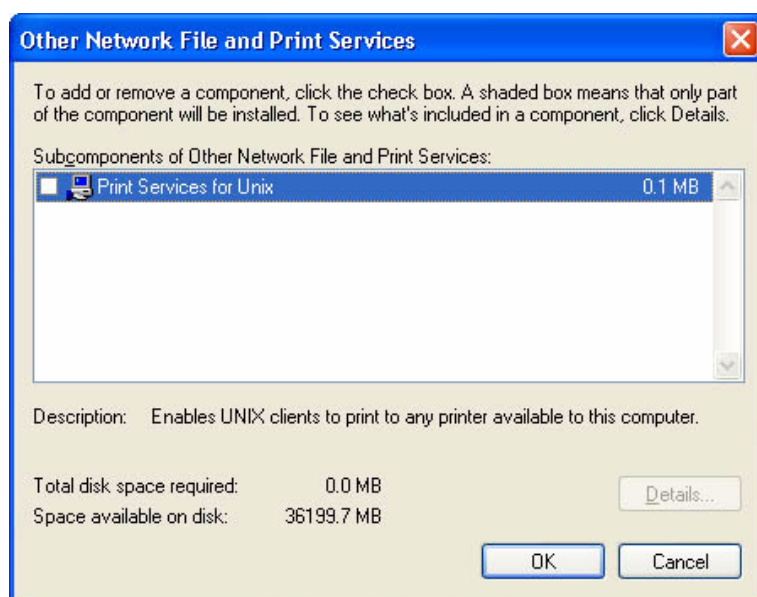
Note:

If you clicked [Details], go to step 3).



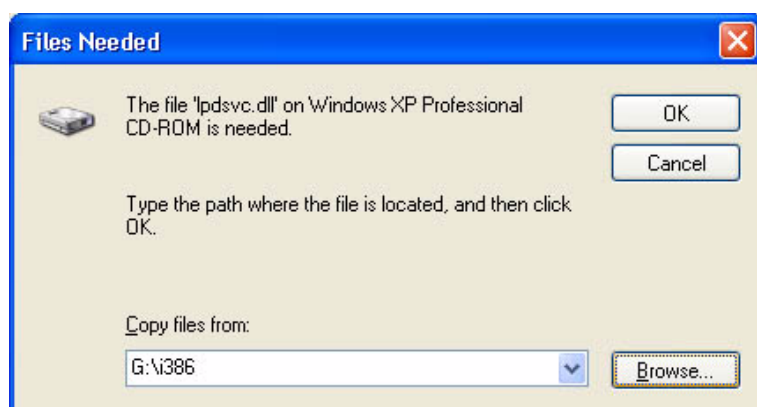
F-3-35

- 3) If you clicked [Details] for [Windows Components Wizard],
- see that [Other Network File and Print Services] has appeared.
  - select the check box to the left of [Print Services for Unix], and click [OK].
  - when the screen you saw in step 2) has returned, click [Next], and go to step 4).



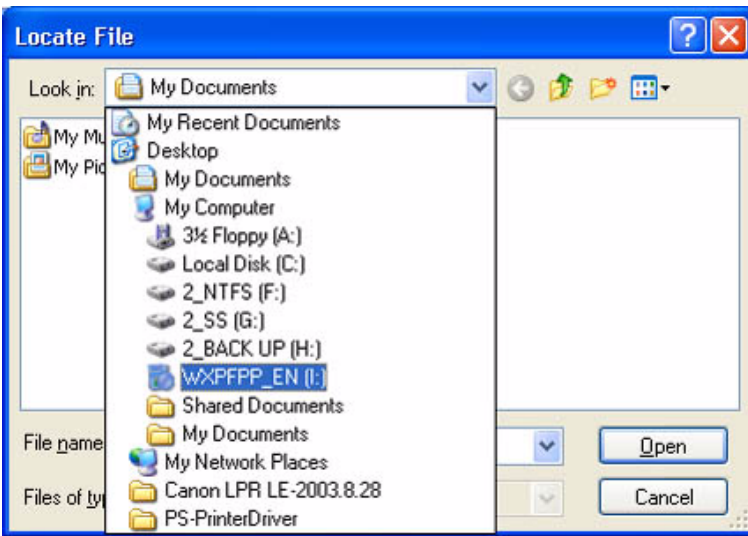
F-3-36

4) Click [Browse].



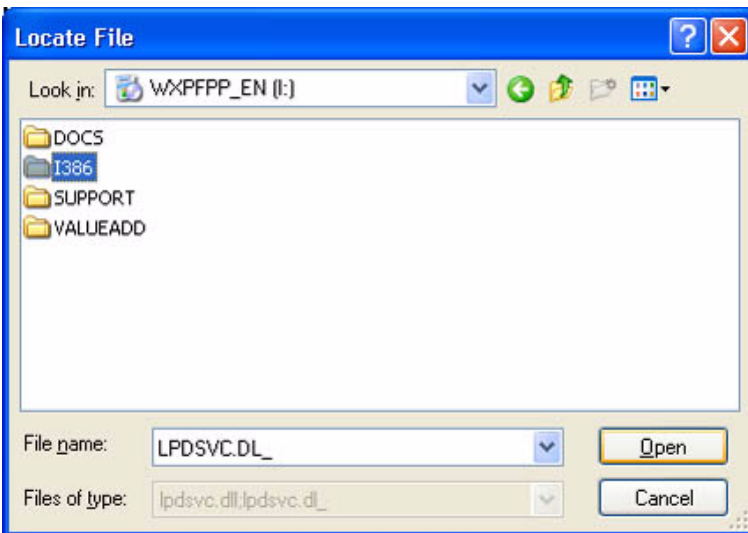
F-3-37

5) Select CD-ROM drive from [Look-in] dropdown list.



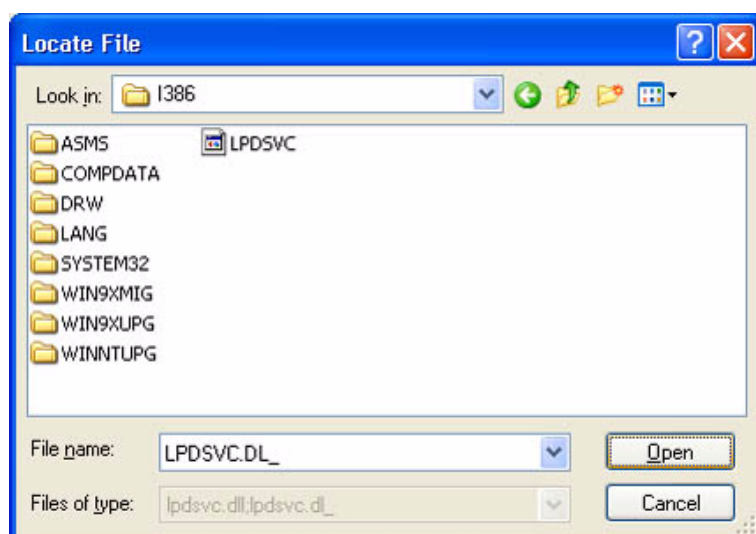
F-3-38

6) Select [I386] in the CD-ROM disk and click [Open].



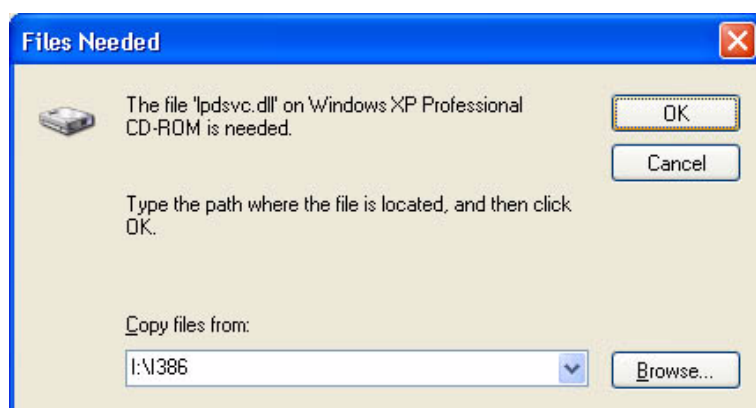
F-3-39

7) Check that [LPDSVC.DL\_] is displayed in [File name] field and click [Open].



F-3-40

8) Click [OK].



F-3-41

9) On [Completing the Windows Components Wizard] screen, click [Finish].  
Click [Exit] on the Windows setup screen and remove the CD-ROM disk of the Windows XP.

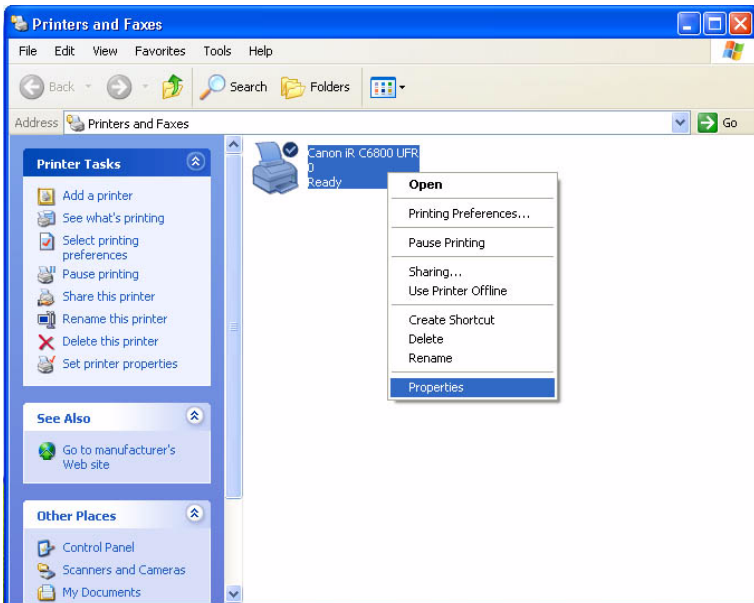


F-3-42

---

### Changing from Standard TCP/IP Port to LPR Port (UNIX print service)

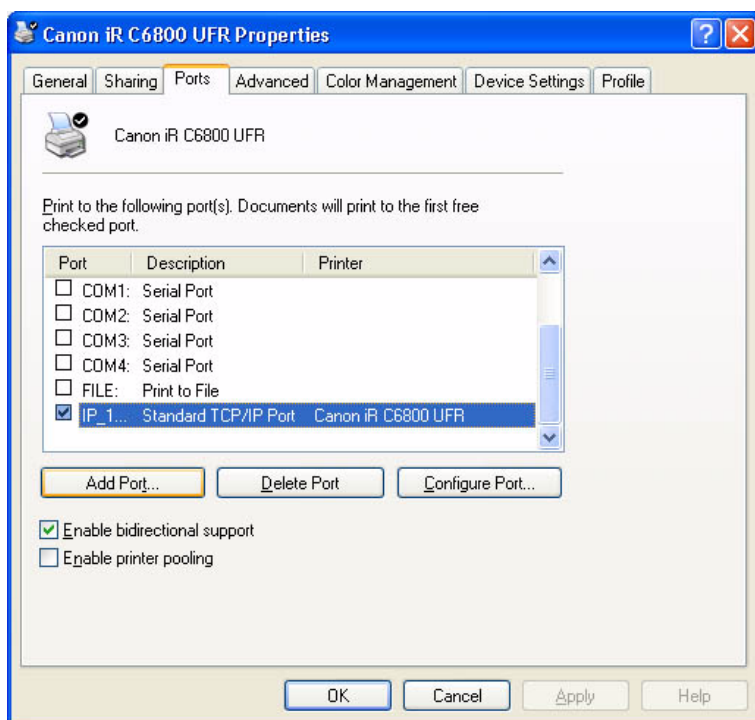
1) Right-click the printer icon; then, select and click [Properties] of the short cut menu.



F-3-43

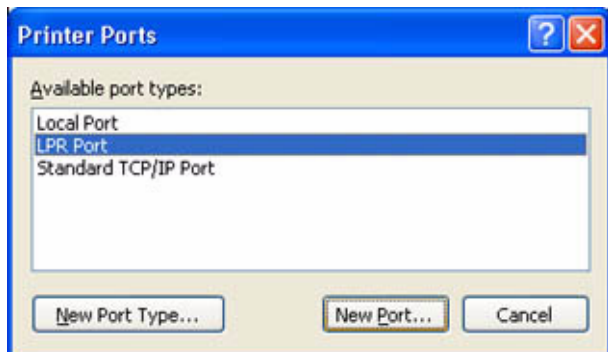
2) Select the [Ports] tab; then, click [Add port].





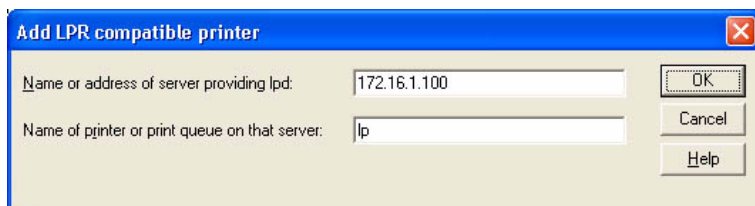
F-3-44

3) Select [LPR Port], and click [New Port].



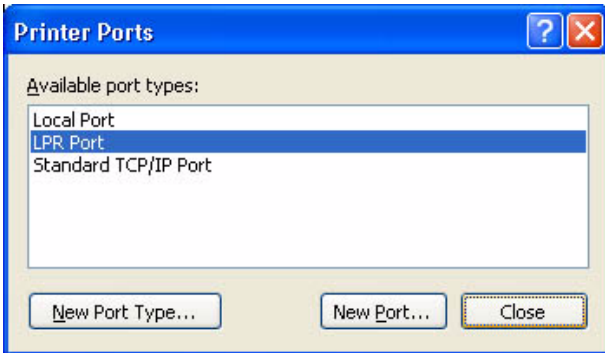
F-3-45

4) Enter the IP address of the iR C6800 for [Name or address of server providing lpd]; then, type "lp" for [Name of printer or print queue on that server]. Thereafter, click [OK].



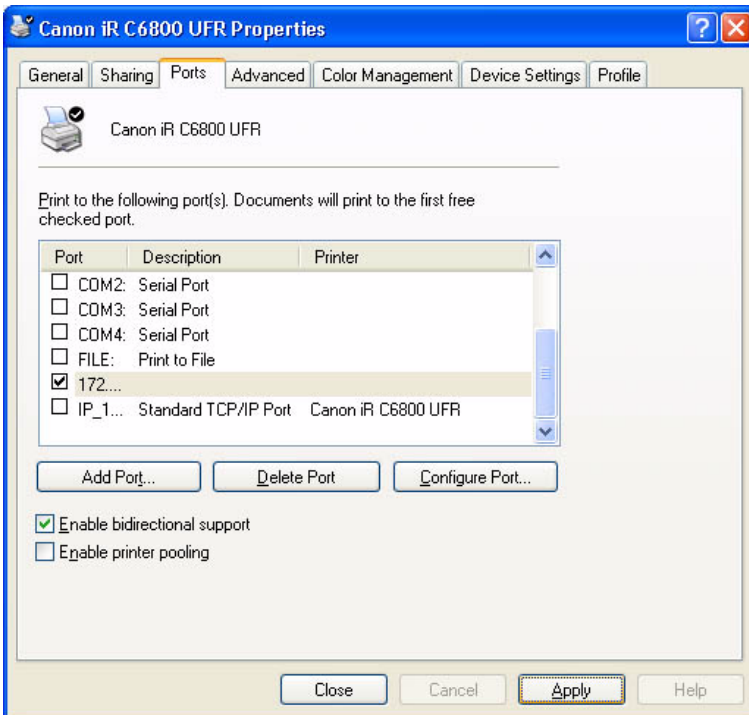
F-3-46

5) Click [Close].



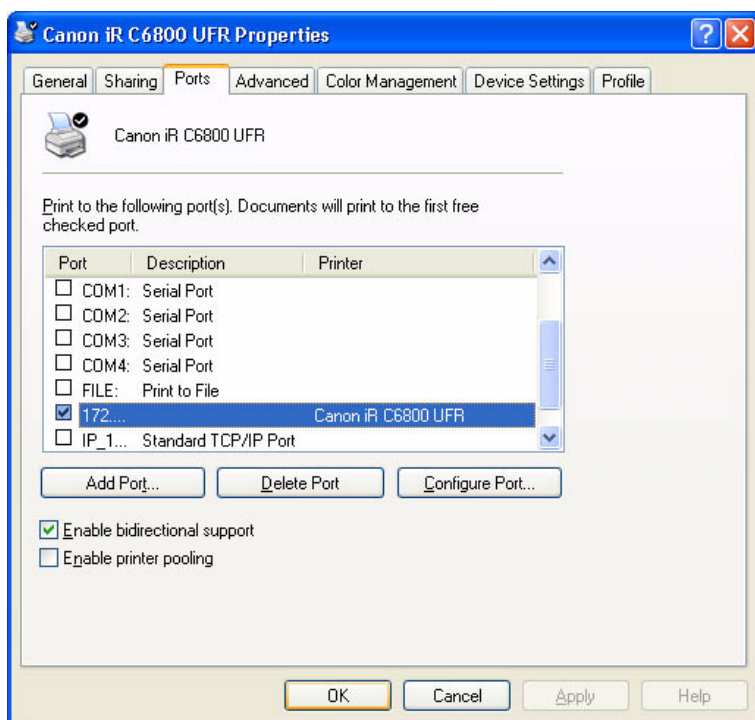
F-3-47

6) Check to see that the check box of the LPR port that has been newly added is checked (selected); then, click [Apply].



F-3-48

7) Click [OK].



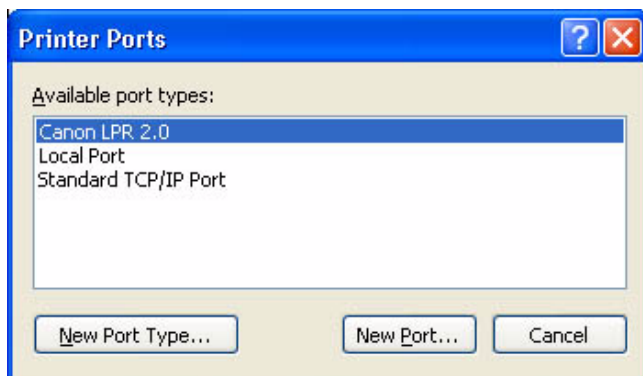
F-3-49

### 3.2.8 Canon LPR2

0006-2905

Canon LPR2 is software designed to print on a printer connected to a TCP/IP network from Windows 95/98/Me/NT4.0/2000/XP.

In the case of Windows XP/2000, Canon LPR2 may be used.



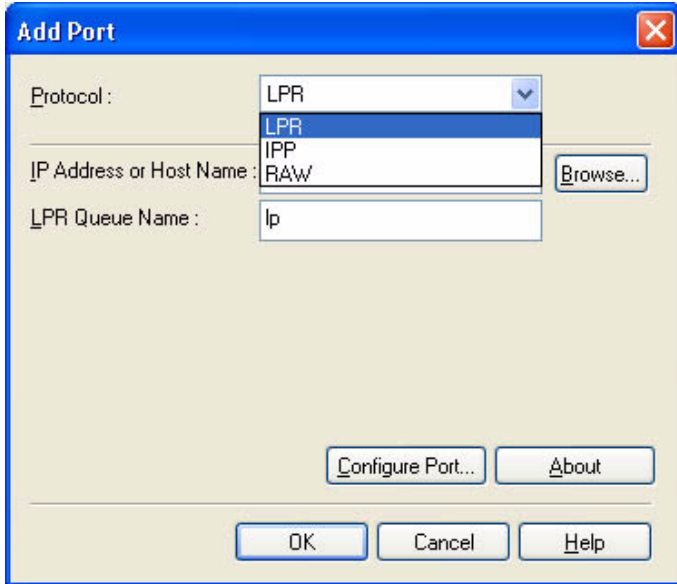
F-3-50

**Canon LPR2 has the following functions:**

**Support of Multiple Ports**

- Canon LPR2 permits selection of the following protocols:
  
- LPR
- RAW
- IPP

Protocol Selection Screen

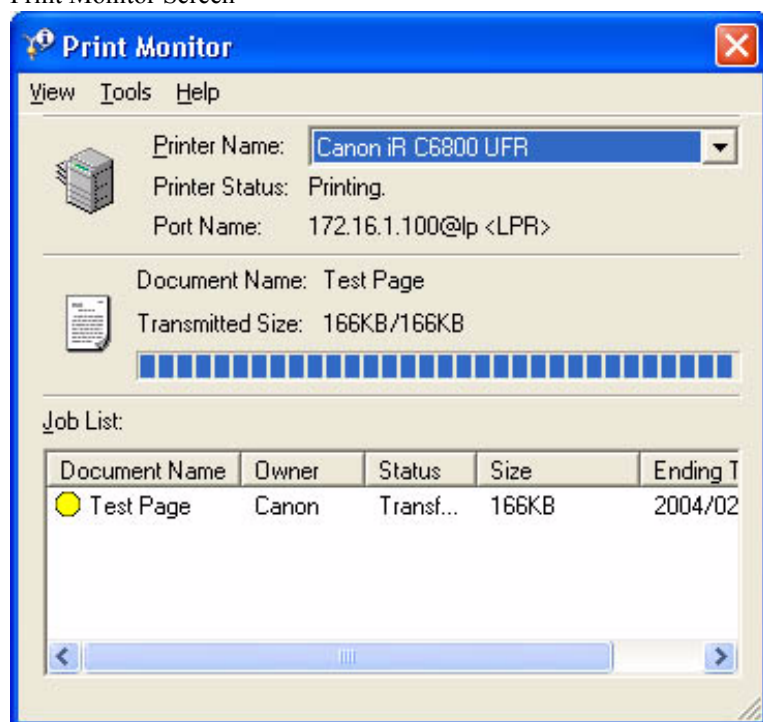


F-3-51

**Monitor Screen**

- The monitor to screen (Print Monitor) is displayed to suit the print instructions sent to the printer, showing the job status from the client and the status of the printer connected by way of the port monitor. The program used for the Print Monitor screen is part of the port monitor.

## Print Monitor Screen



F-3-52

### 3.2.9 Installing Canon LPR2

0006-2906

If you are using standard TCP/IP port, you need not install Canon LPR2

If the limits imposed by the user environment preclude the use of the standard TCP/IP port and, as a result, you need to select Canon LPR2, install it as follows:

- 1) Set the User Software CD-ROM in the CD-ROM drive. When the UFR CD-ROM Setup screen has appeared, click the close box to close the screen.

Note:

If the UFR CD-ROM Setup screen does not appear when you have set the User Software CD-ROM, go to step 2).

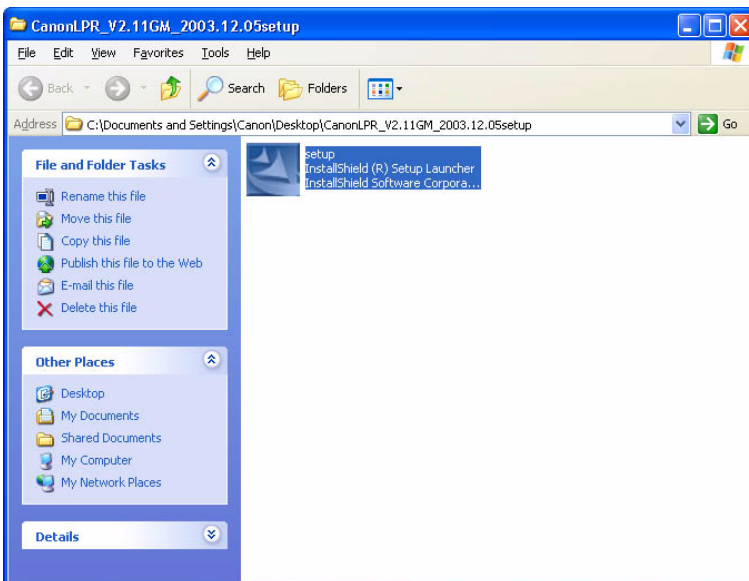
- 2) Click [start] and then [My Computer].



F-3-53

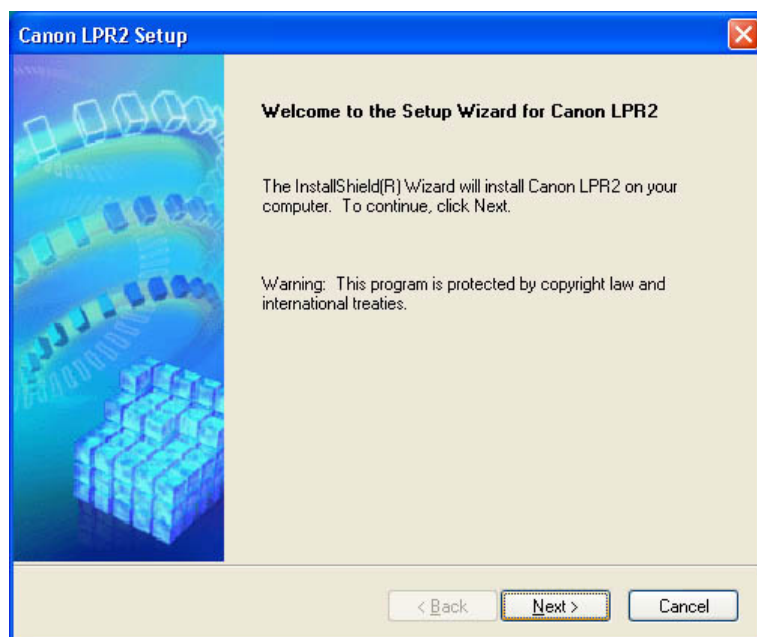
3) Double-click the CD-ROM drive.

Double-click the SETUP.EXE icon in the LPR port folder.



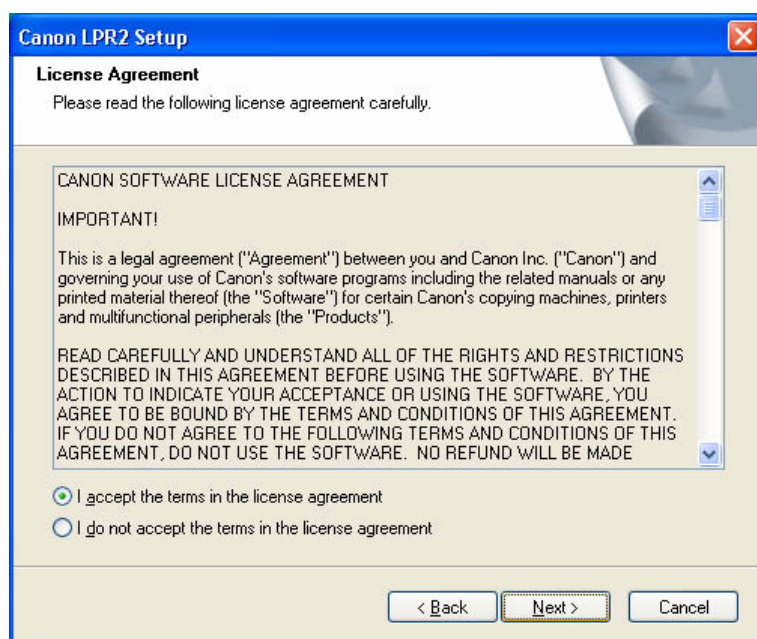
F-3-54

4) Click [Next].



F-3-55

5) Select [I accept the terms in the license agreement]; then, click [Next].



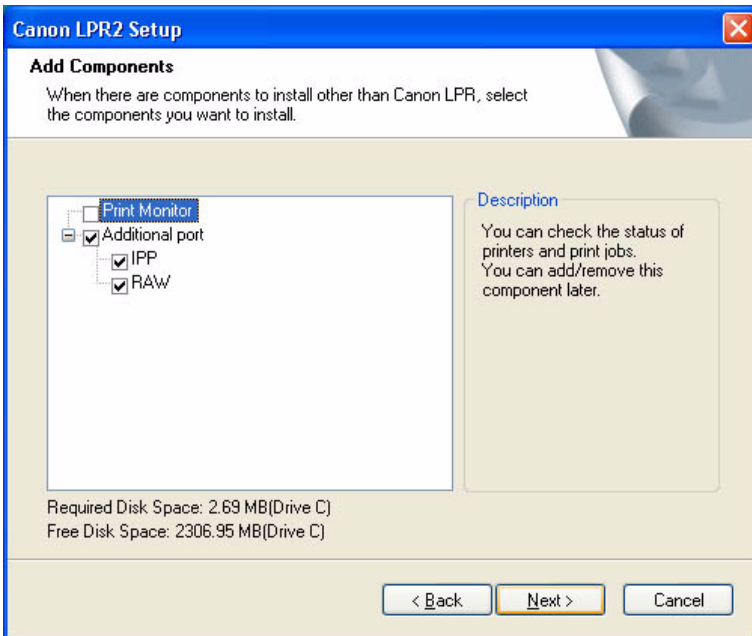
F-3-56

6) Click [Next].

Reference:

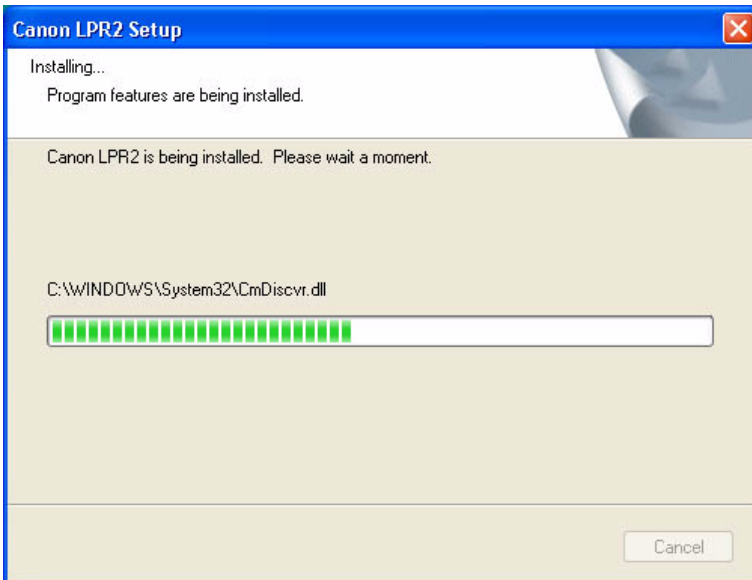
If you check (select) the check box [Print Monitor] and click [Next], the files needed for the Print Monitor

functions mentioned under "Canon LPR2" will be installed to enable these functions; as necessary, check (select) the check box.



F-3-57

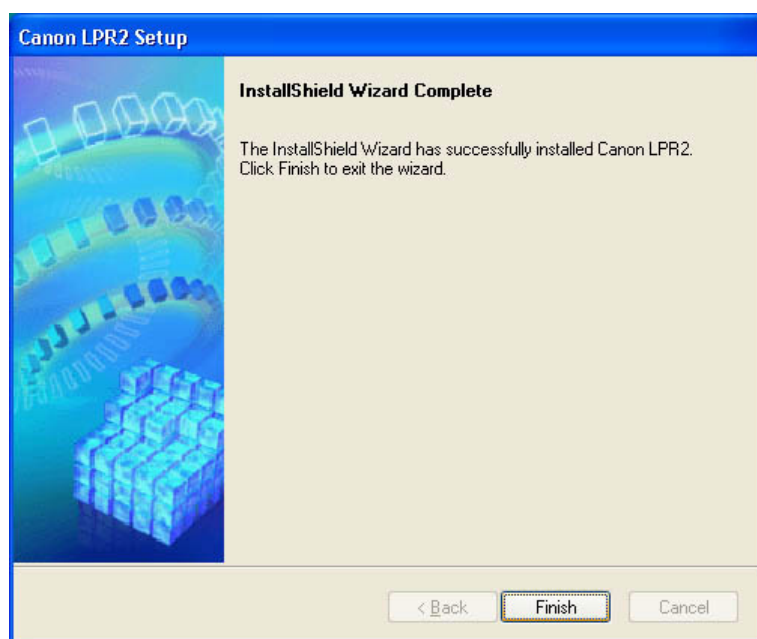
7) See that the installation starts.



F-3-58

8) Click [Finish].

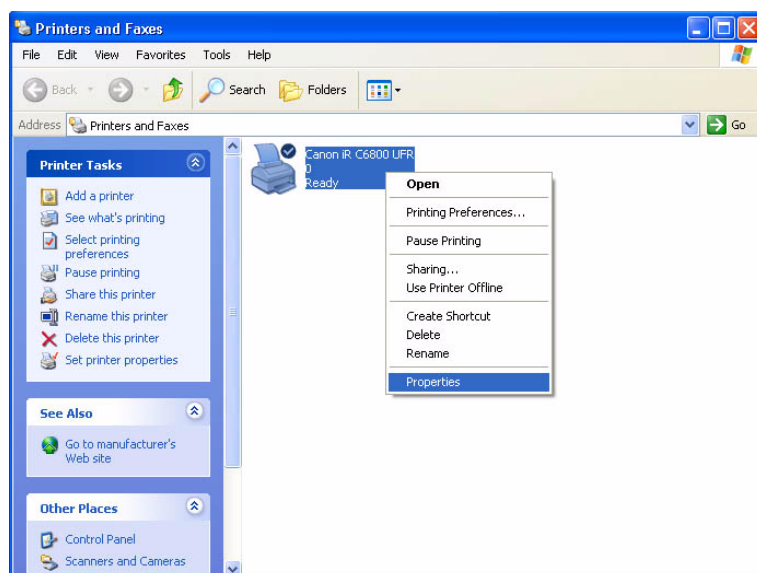




F-3-59

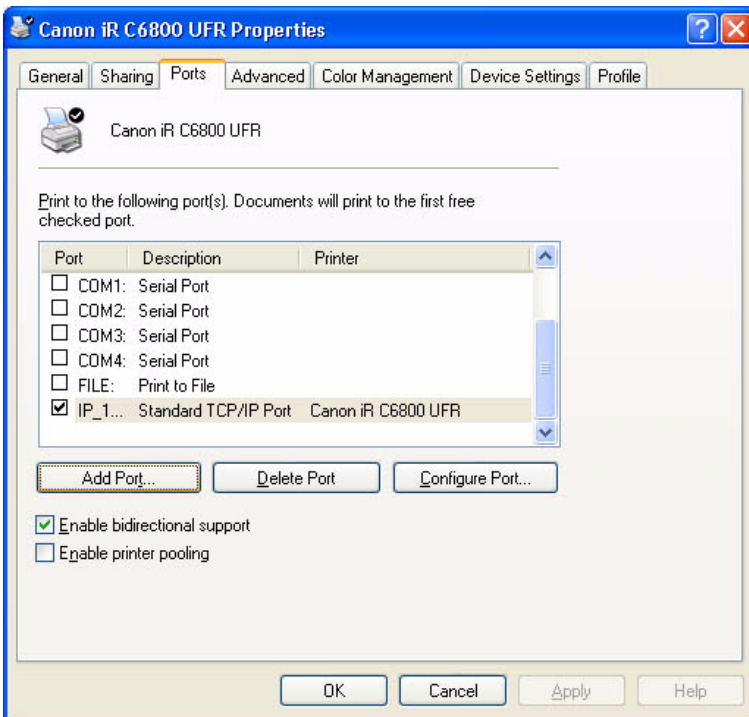
### Changing from Standard TCP/IP Port to Canon LPR2 Port

1) Right-click the printer icon; then, select and click [Properties] of the short cut menu.



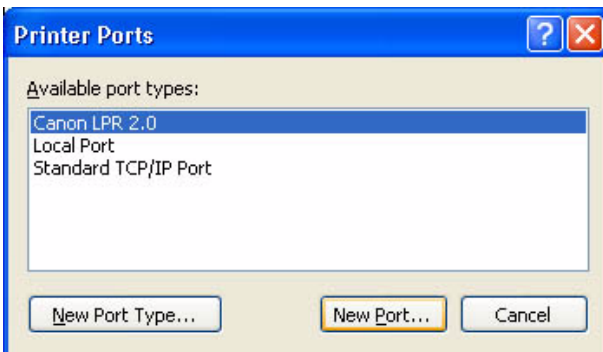
F-3-60

2) Select the [Ports] tab; then, click [Add Port].



F-3-61

3) Select [Canon LPR 2.0]; then, click [New Port].

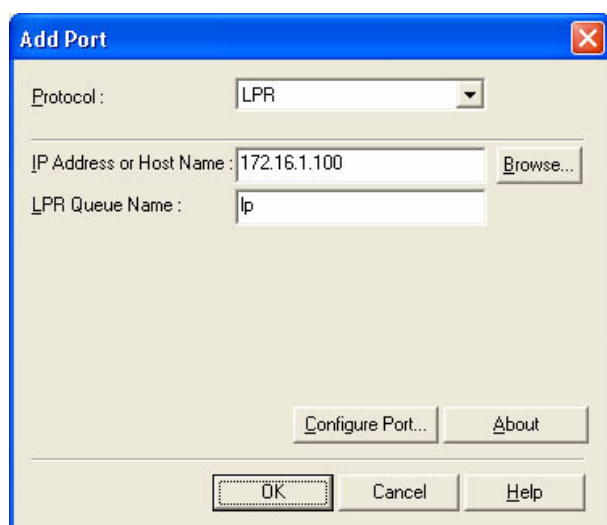


F-3-62

4) Check to see that [Protocol] indicates "LPR" [LPR Queue Name] is automatically filled with "lp." Enter the value you see for the iR C6800 (or collected as information) for [IP address or Host Name].

Note:

If you directly typed for [IP address or Host Name], click [OK] after doing so; then, go to step 5).

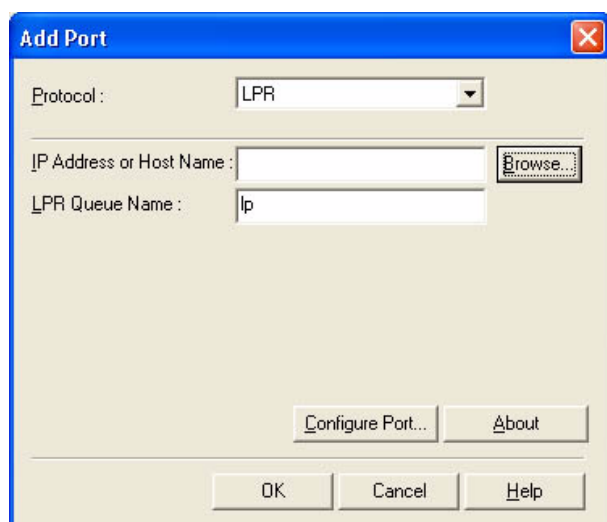


F-3-63

**Reference:**

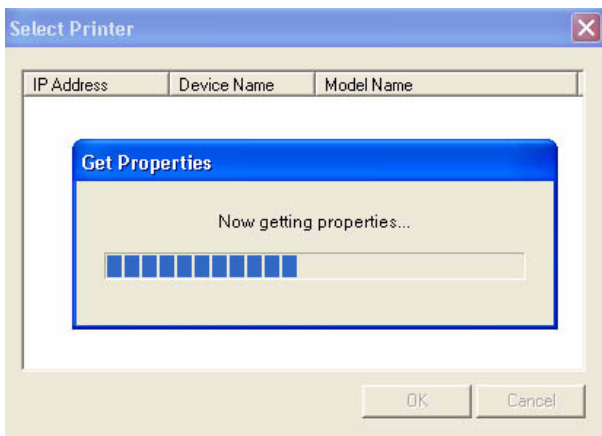
At this point, you may obtain information from the device automatically and indicate the IP address by clicking [Browse] without directly typing in [IP Address]; to do so, go through the following:

1. Click [Browse].



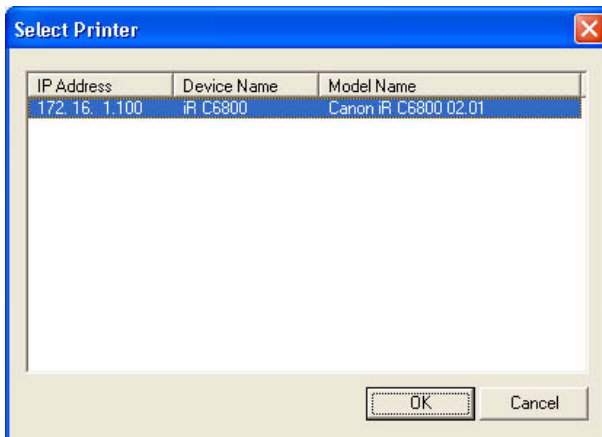
F-3-64

2. See that a screen has appeared to indicate that information is being collected from the device.



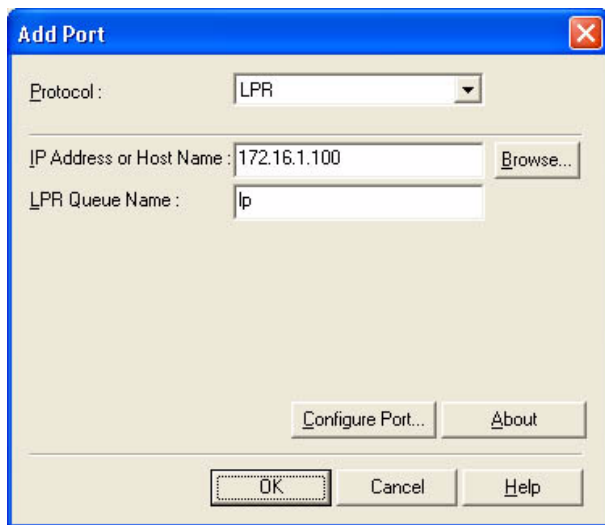
F-3-65

3. See that the device information that has automatically been collected is indicated (IP Address / Device Name / Model Name). Click [OK].



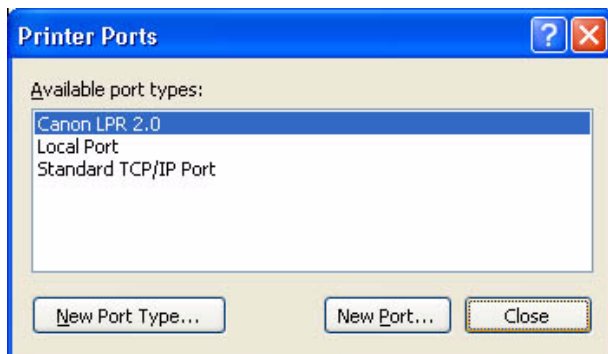
F-3-66

4. Check that the IP address or host name has automatically been collected and indicated; then, click [OK], and go to step 5).



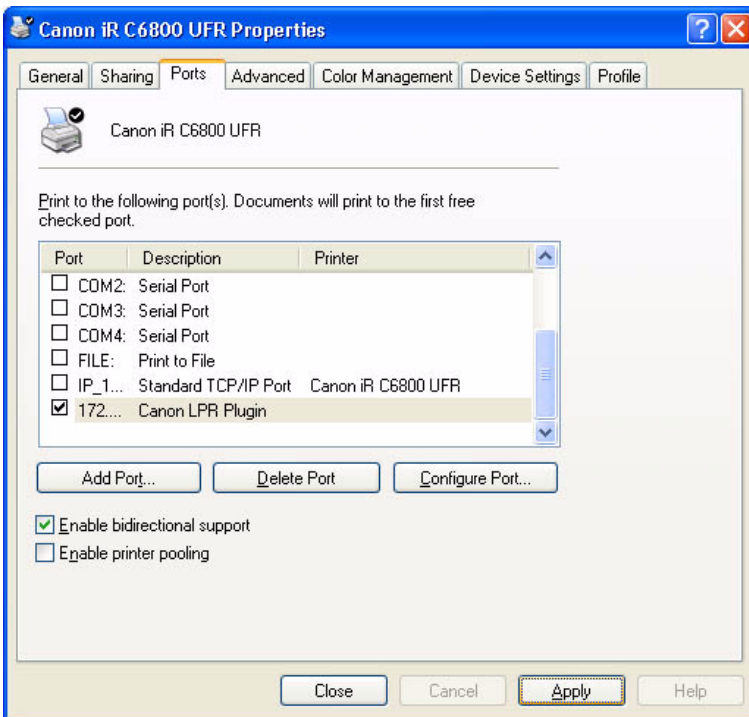
F-3-67

5) Click [Close].



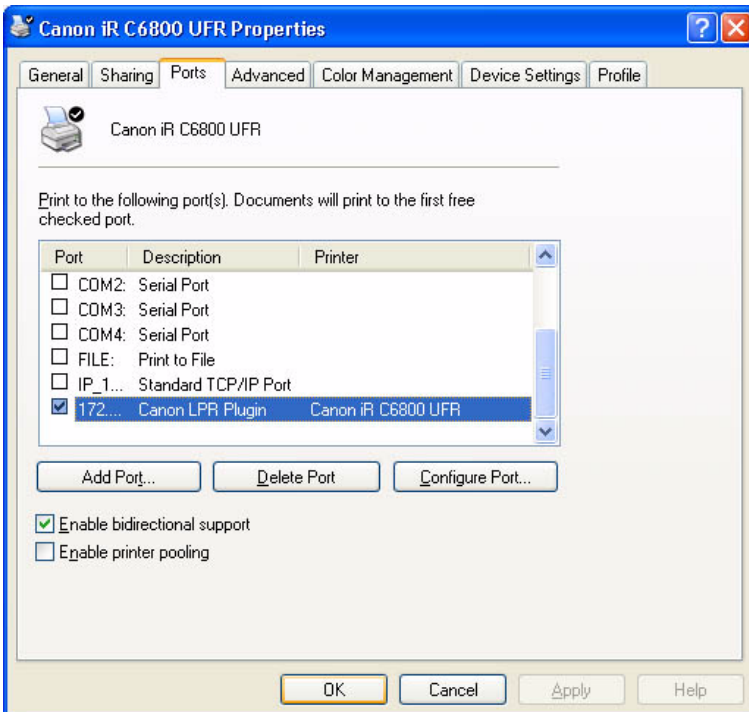
F-3-68

6) Check to see that the check box is checked (selected) for the Canon LPR Plugin as a newly added port and that the port has been changed. Then, click [Apply].



F-3-69

7) Click [OK].



F-3-70

## 3.2.10 Useful Operations

0006-2907

### **Opening Printer Properties and Test Printing From a PC**

#### **< Windows XP Display >**

##### **Category Display (standard install)**

- make the following selections: start>Control Panel>Printers and Other Hardware>Printers and Faxes>printer to open (right-click)>Properties>Print Test Page.

##### **Classic Display**

- make the following selections: start>Settings>Control Panel>Printers and Faxes>printer to open (by right click)>Properties>Print Text Page.

#### **< Windows 2000 Display >**

- make the following selections: Start>Settings>Printers>printer to open (by right-click)>Properties>Print Test Page.

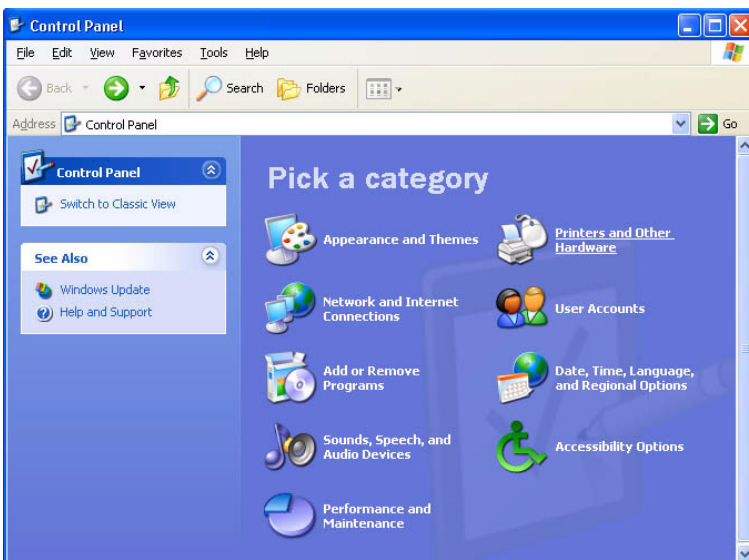
### **Windows XP Category Display**

1) Click [start] and then [Control Panel].



F-3-71

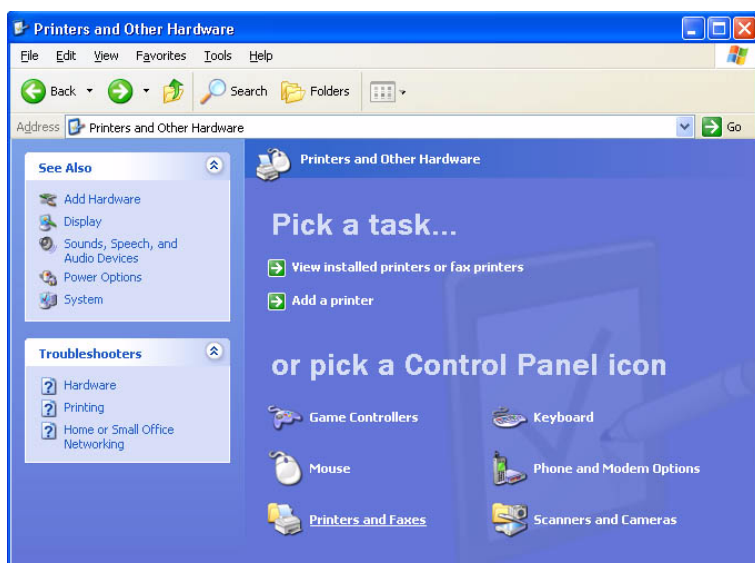
2) Select and click [Printers and Other Hardware].



F-3-72

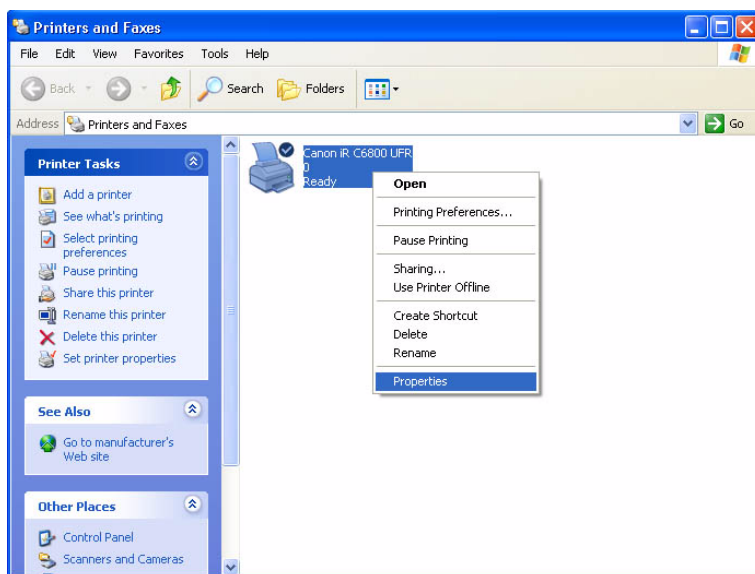
3) Select and click [Printers and Faxes].





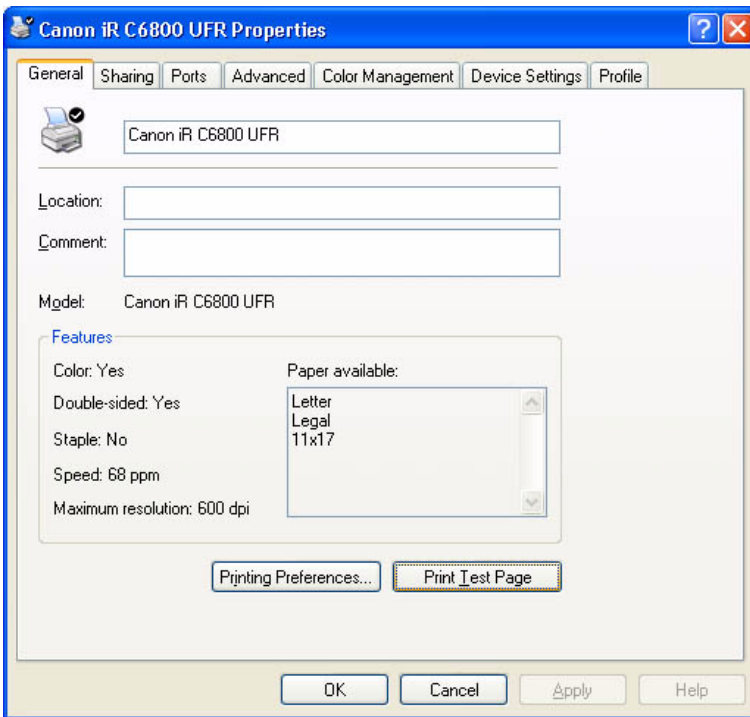
F-3-73

4) Right-click the printer icon, and select and click [Properties].



F-3-74

5) When the Properties screen has appeared, click the [General] tab and [Print Test Page] if you want to execute text printing.



F-3-75

### Checking the Printer of First Choice

-To find out which printer is selected as the printer of first choice, make the following selections, and see which has its icon checked (selected): start>Control Panel>Printers and Other Hardware>Printers and Faxes.



**Set as Default Printer**



**Not Set as Default Printer**

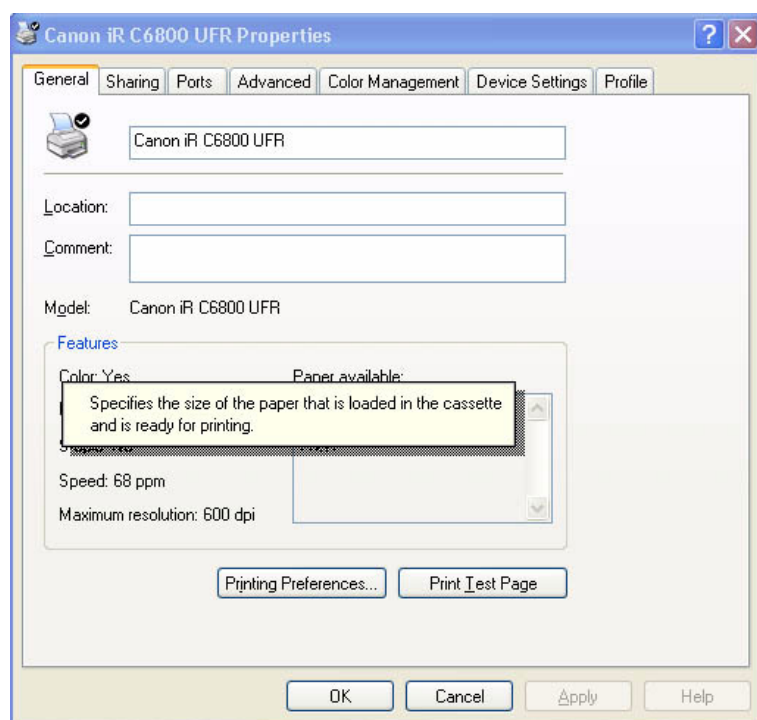
F-3-76

### To Select a Different Printer

- Right-click the icon of the printer you want to use; then, put a check mark under [Printer of First Choice].

### To Display Help

- The Printer Driver Display screen offers a Help guide.
- To display the Help guide, click the ? symbol found in the upper right corner of the Windows screen, point the cursor to the item you want to check, and left-click it.



F-3-77

### 3.2.11 Switching Between RAW and LPR

0006-2909

#### Switching Between RAW and LPR

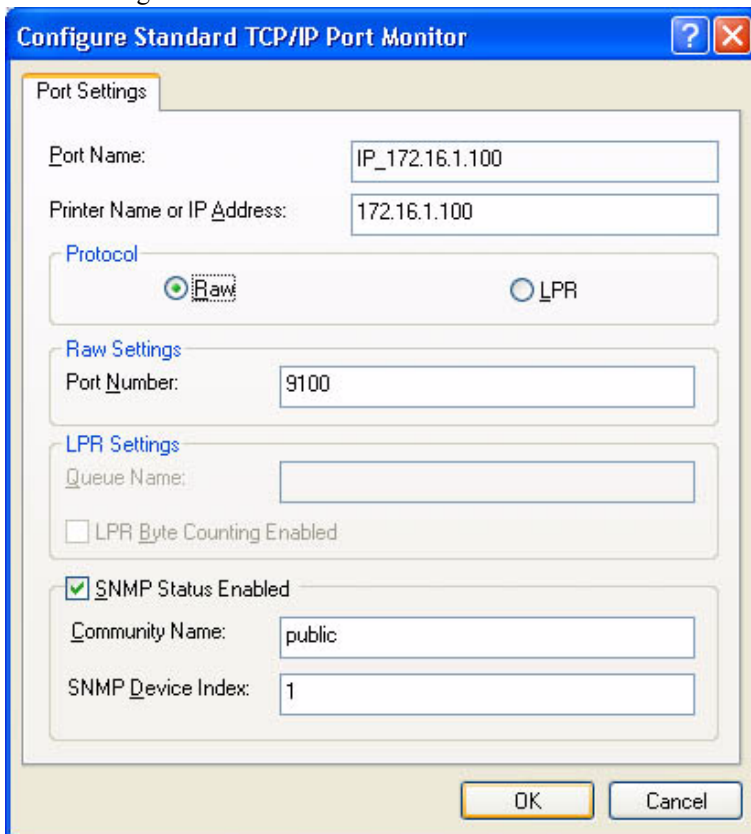
1) Make the following selections: start>Control Panel>Printers and Other Hardware>Printers and Faxes>printer to open (right click)>Properties>Ports (tab)>(select the desired item; the currently selected printer is checked)>Configure Port.

2) Specify either operation for RAW procedure under [Raw] and [LPR] within [Protocol] or operation for LPR.

< RAW >

- Type '9100' for [Port Number].

RAW Setting



F-3-78

< LPR >

- Type 'lp' for [Queue Name] in the case of an iR C6800.
- Make the appropriate setting for [LPR Byte Counting Enabled].
- Type appropriate settings for [SNMP Status Enabled], [Community Name] and [SNMP Device Index] within the item.

## LPR Setting

**Configure Standard TCP/IP Port Monitor**

Port Settings

Port Name: IP\_172.16.1.100

Printer Name or IP Address: 172.16.1.100

Protocol

Raw  LPR

Raw Settings

Port Number: 9100

LPR Settings

Queue Name: lp

LPR Byte Counting Enabled

SNMP Status Enabled

Community Name: public

SNMP Device Index: 1

OK Cancel

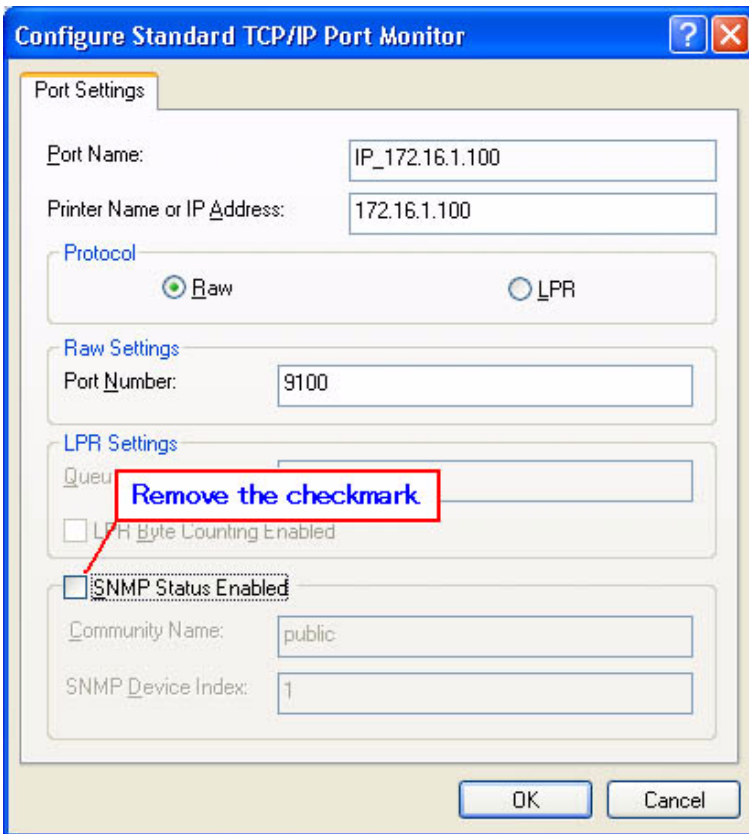
F-3-79

### 3.2.12 Remedy for Faults Caused by the Environment (30 client PCs or more)

0006-2910

**If SMB connection fails or takes about 30 min, go through the following**

start>Control Panel>Printers and Other Hardware>Printers and Faxes>(right click the printer icon>Prosperities>Ports(tab)>Standard>(select[Standard TCP/IP Port]by putting a check mark in the check box>Configure Port(deselect by removing the check mark from[SNMP Status Enabled]>OK(click).



F-3-80

---

## 3.3 UFR Setup Guide for Win9x

---

### 3.3.1 Overview

0006-2911

The instructions herein show how to make network connections for printer drivers using Canon LPR2.

- UFR is a PDL designed to print on an iR C6800 or iR C6800N from a PC.

Note:

In the case of the iR C6800, this function will be available when a Canon Color Network UFR Printer Kit-C1 (option) is installed.

(The function comes as standard with the iR C6800N.)

- Canon LPR2 uses the TCP/IP protocol for communication between the PC and the printer, allowing network printing as done on a local network.

### 3.3.2 Items to Prepare and Points to Note

0006-2912

**You will need the following for the installation of printer drivers:**

Canon Color Network UFR Printer Kit-C1

(optional for iR C6800; standard for iR C6800N)

- User Software CD-ROM (included with Canon Color Network UFR Printer Kit-C1)

**For detailed information, see the following documentation:**

- iR C6800/C6800N [Reference Guide]

- iR C6800/C6800N [Network Quick Start Guide]

- iR C6800N [Printer Guide] (Included in [User Manual CD-ROM].)

(optional for iR C6800; standard for iR C6800N)

The instructions herein are based on Windows 98; more or less the same instructions may be used for Windows Me.

### 3.3.3 Connecting the Network Cable

0006-2914

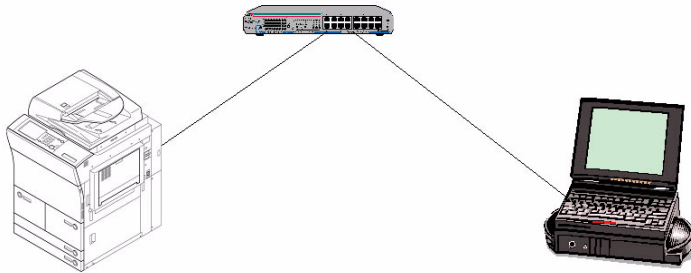
Connect the network cable.

<10Base-T/100Base-T>

- Have a LAN cable on hand (straight, 10Base-T/100Base-T).
- Connect the cable connector to the open HUB port.

- Connect the other cable connector to the iR C6800.

#### Sample Connection



F-3-81

### 3.3.4 Collecting Information Before Making Settings (on the side of the iR C6800)

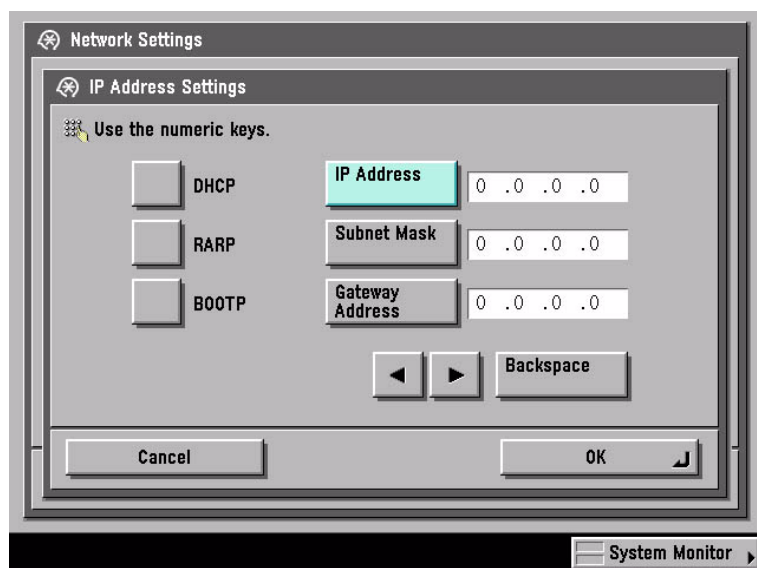
0006-2915

1) Find out the IP address given to the printer:

1. turn on the power.
2. click [Ad Func].
3. click [System Settings].
4. click [Network Settings].
5. click [TCP/IP Settings].
6. click [IP Address Settings].

(When you have obtained the IP address, click [Cancel] to end the operation.)





F-3-82

2) Take note of the IP address. You will be using it later when making network settings on the PC.

- Checking the Settings of the iR C6800

Ad Func>Report Settings>Network>User's Data List>Yes

see that a user data list (network) has been printed.

Note:

The IP address may also be checked on the printed user data list

- If no IP address has been set, set it, and click [OK] on the control panel.

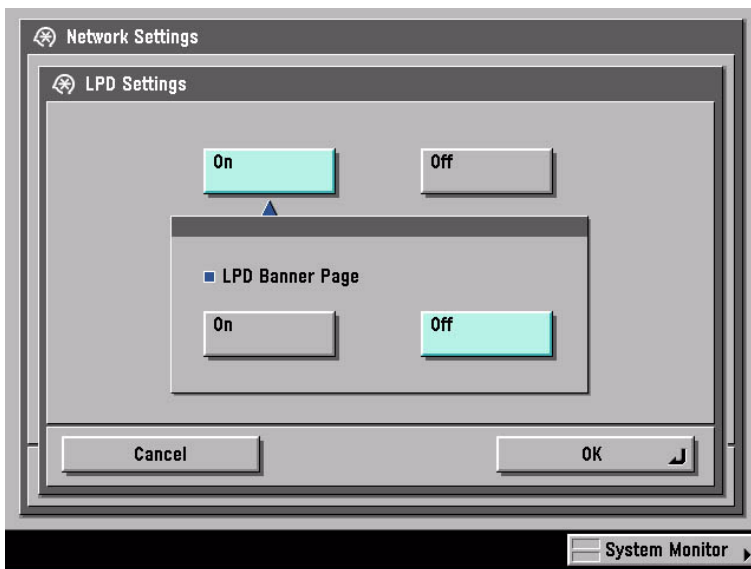
- There after, turn off the power, turn off the main power, and turn on the main power.

3) Check the LPD settings of the printer:

1. turn on the power.
2. click [Ad Func].
3. click [System Settings].
4. click [Network Settings].
5. click [TCP/IP Settings].
6. click Downward arrow button .
7. click [LPD Settings].
8. check to see that the notation is [On].

- if the notation is [On], click [Cancel] to end the operation.

- if the notation is [Off], on the other hand, click [On] and then [OK], while leaving [LPD Banner page] as it is.



F-3-83

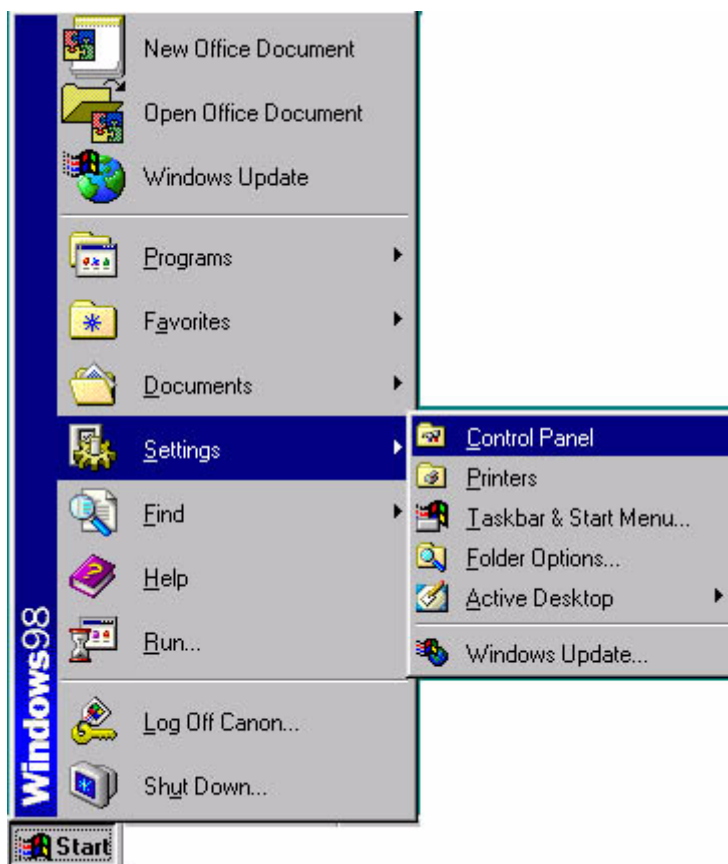
- After making these settings, turn off the power, turn off the main power, and turn on the main power.

### 3.3.5 Collecting Information Before Making the Settings (on the Windows PC side)

0006-2916

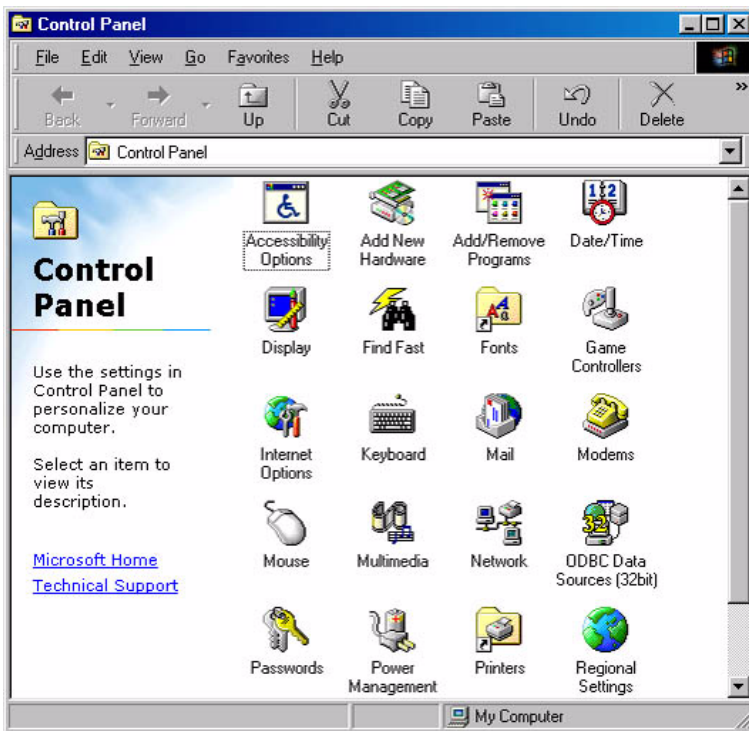
**Check the name of the network interface card and TCP/IP.**

1) Make the following selections: Start>Settings>Control Panel.



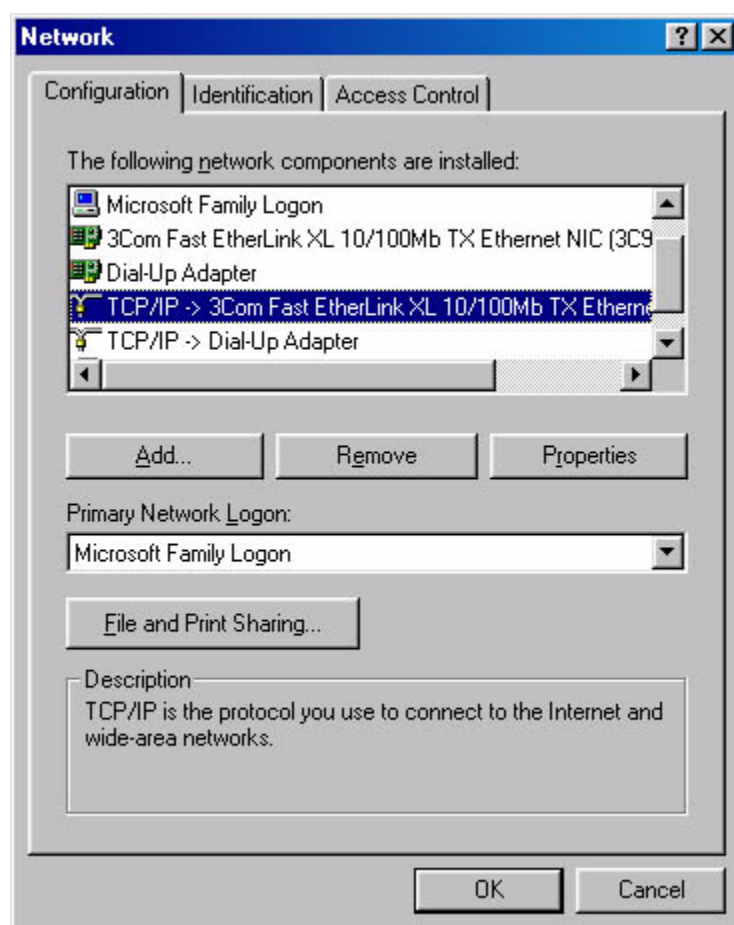
F-3-84

2) Double-click the Network icon.



F-3-85

- 3) Check the [Configuration] tab, making sure that the name of the network interface card (here, [3com Fast EtherLink XL 10/100Mb TX Ethernet NIC(3C905B-TX)]) and TCP/IP are found.

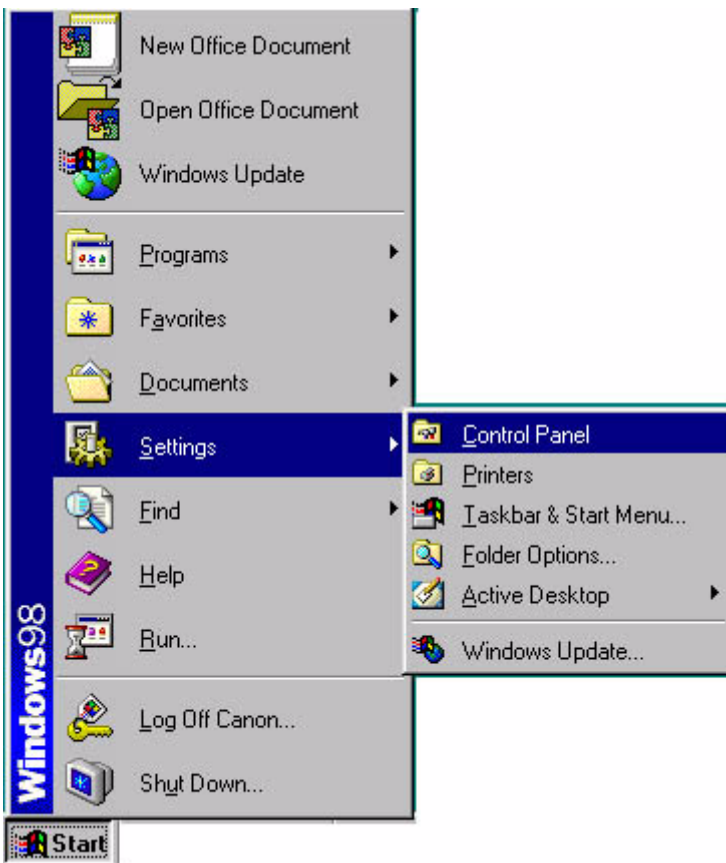


F-3-86

### 3.3.6 Making Settings Without Using Automatic Execution (CD-ROM) [0006-2917](#)

- If you have failed to install printer drivers, go through the individual steps manually to identify the cause. At times, not using the automatic execution (occurring in response to the insertion of the CD-ROM) may prove to be a good means of finding out the cause; go through the following steps:

1) Make the following selections: Start>Settings>Control Panel.



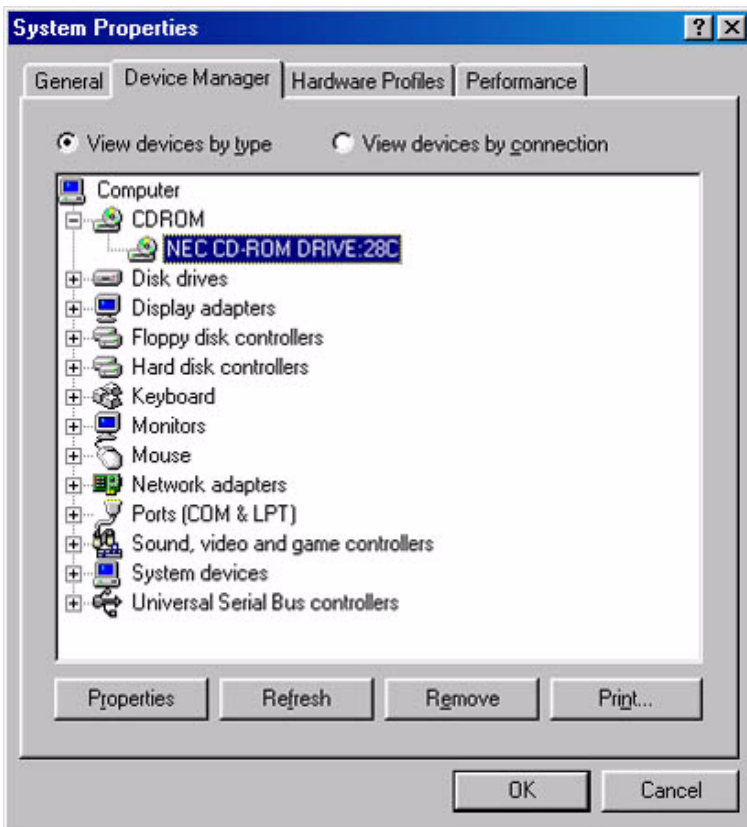
F-3-87

2) Double-click the System icon.



F-3-88

3) Make the following selections: Device Manager>CDROM>CD-ROM DRIVE.

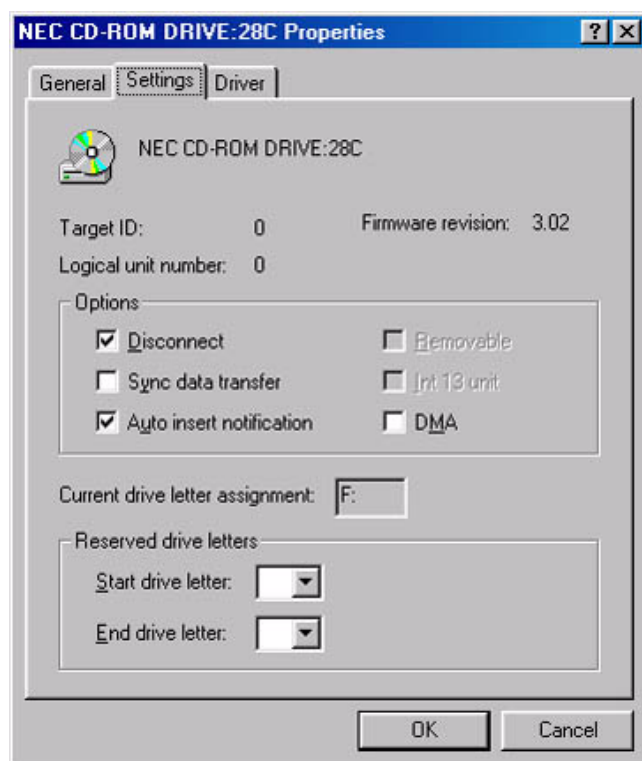


F-3-89

4) Open the [Settings] tab . Check to see if [Auto insert notification ] is selected or not.

- if not selected (without a check mark), auto execution will not occur.
- if selected (with a check mark), remove the check, and click [OK] and then [Close]. When asked if you want to restart, click [Yes] to restart the PC.





F-3-90

- The foregoing settings are valid only for automatic execution that would otherwise occur; regardless of these settings, double-clicking the CD-ROM icon (My Computer) will start up the menu program.

### 3.3.7 Canon LPR2

0006-2918

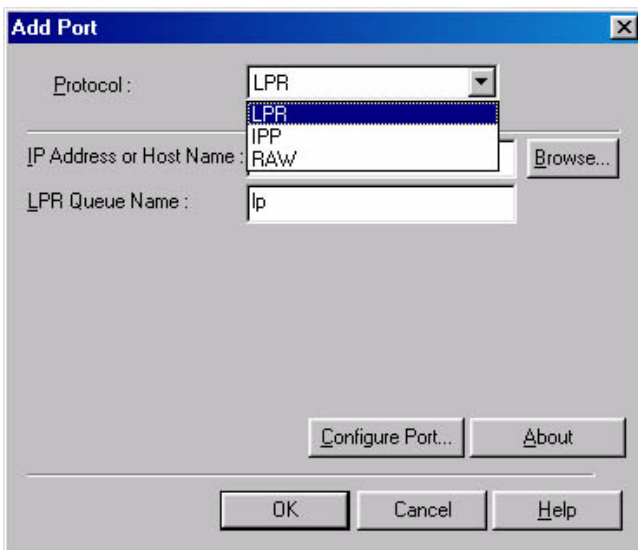
Canon LPR2 is software designed to enable printing on a printer connected to a network from Windows 95/98/Me/NT4.0/2000/XP, and it offers the following functions:

#### Support of Multiple Ports

Any of the following protocols may be selected for Canon LPR2

- LPR
- RAW
- IPP

## Protocol Selection Screen

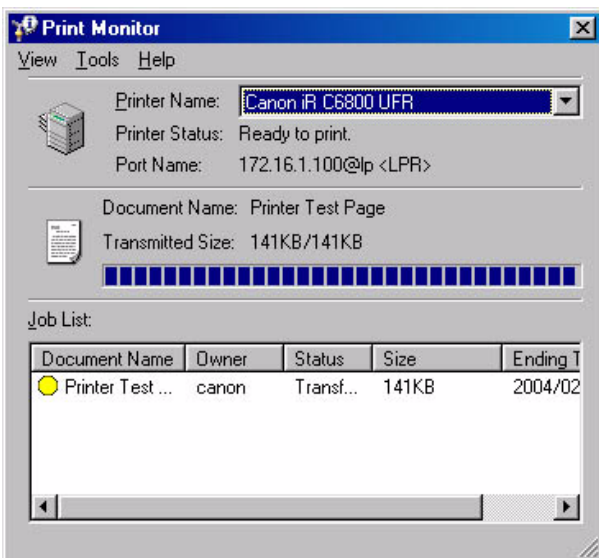


F-3-91

**PRINT MONITOR**

The status of the printer connected by way of the port monitor and the status of jobs from clients are displayed on the monitor screen (PRINT MONITOR) in keeping with the instructions sent to the printer. The monitor screen program is part of the port monitor.

## Print Monitor Screen



F-3-92

**3.3.8 Installing Canon LPR2**

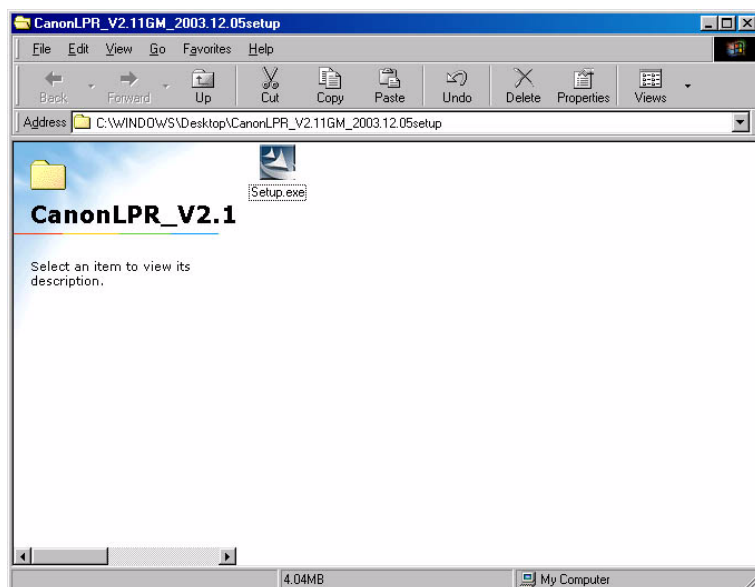
0006-2919

1) When the CD-ROM (User Software CD-ROM) is set in the CD-ROM drive of the PC, the setup screen will appear

unless auto execution is disabled:

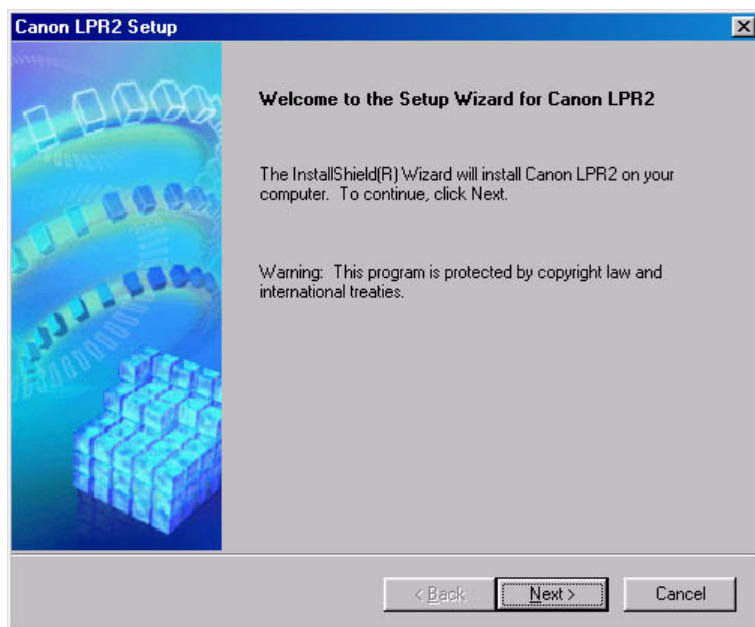
- If you want to close the screen, click the close button in the upper right corner of the Windows screen.

2) Double-click the CD-ROM drive. Double-click the Setup.exe icon in the LPR port folder.



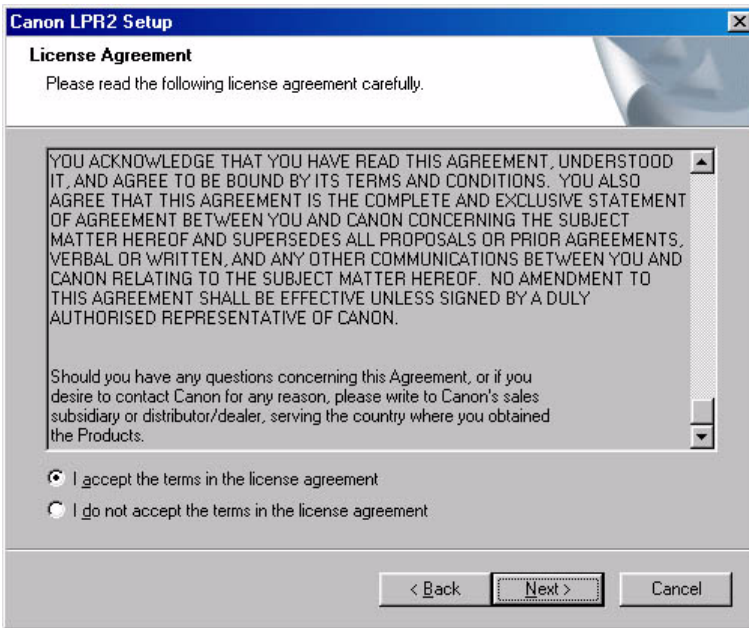
F-3-93

3) Click [Next].



F-3-94

4) Select [I accept the terms in the license agreement], and click [Next].

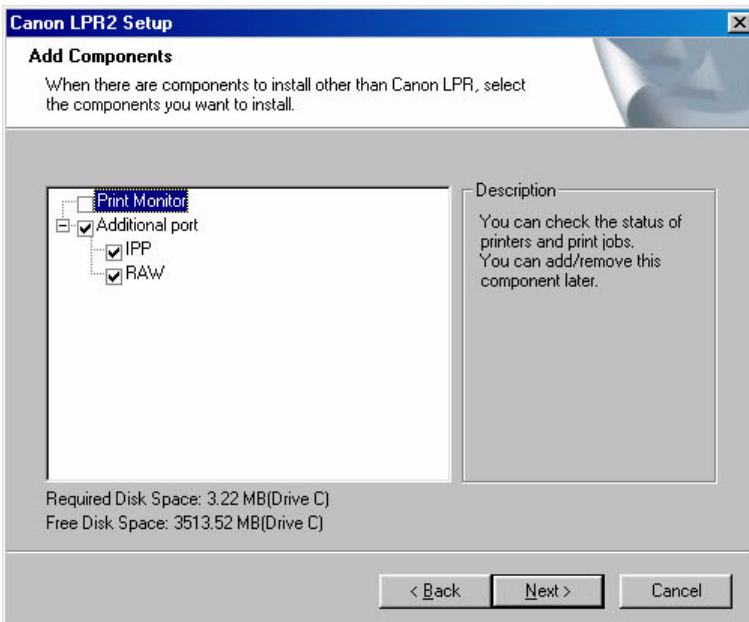


F-3-95

5) Click [Next].

Note:

If you are not installing 'printer monitor', check to see that the notation is not checked (selected); then, click [Next] to go to step 6).

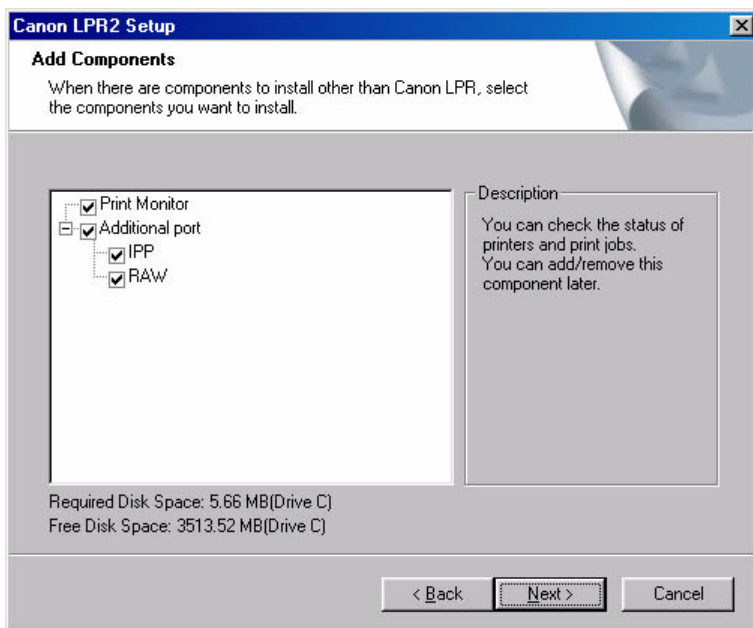


F-3-96

Note:

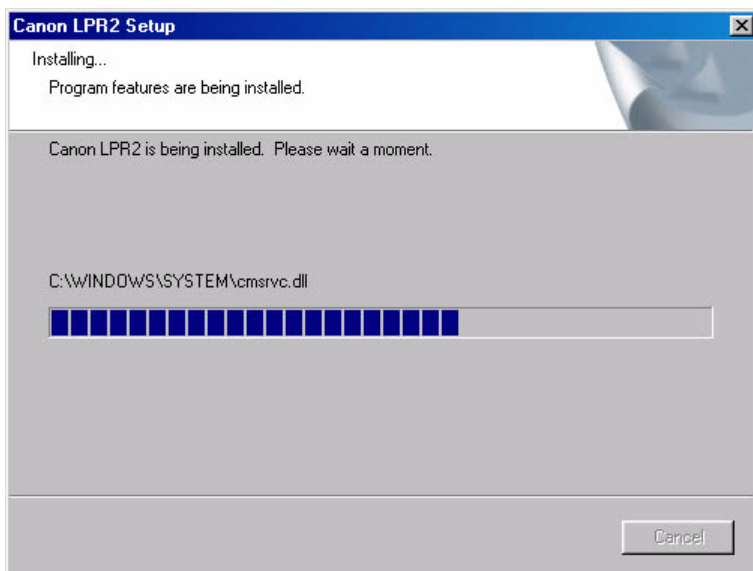
If you want to install 'Print Monitor', on other hand, go through steps 1 through 4.

1. Select 'Print Monitor'(by adding a check mark), and click [Next].



F-3-97

2. See that installation starts and files are copied. (Once it has started, you cannot "Cancel" the operation.)



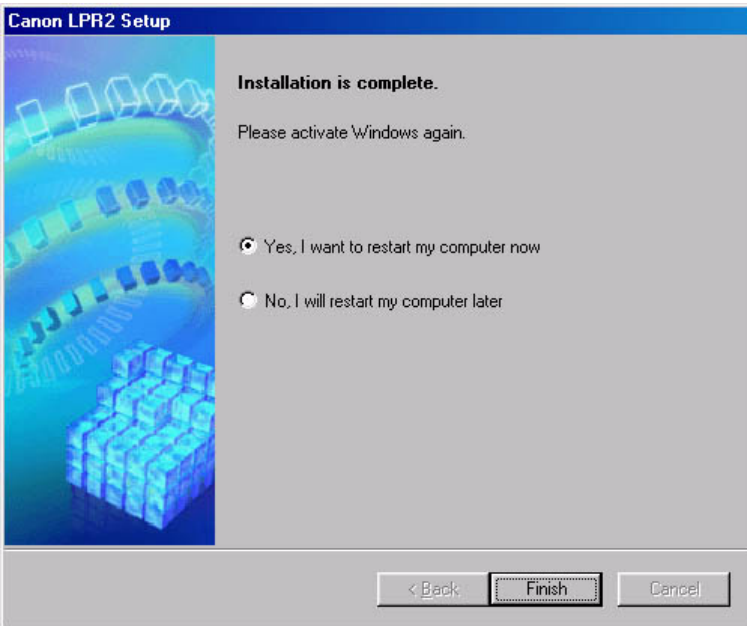
F-3-98

3. Click [Finish]

- If any other application is running, select [Yes, I want to restart my computer now], and click [Finish]

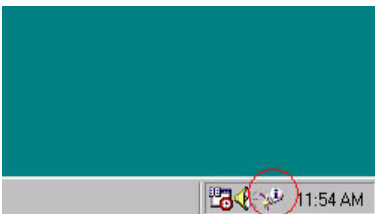
Restart the PC manually after ending the application.

- If no other application is running, select [No, I will restart my computer later], and click [Finish]. The PC will restart.



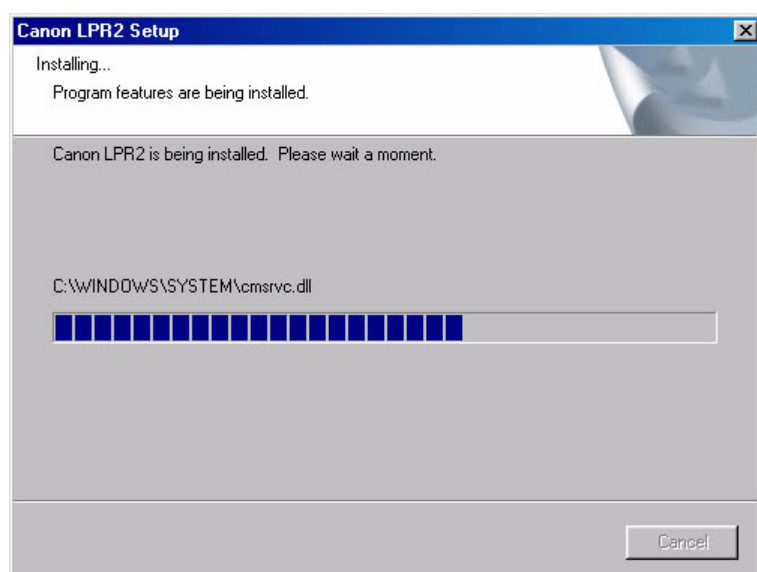
F-3-99

4. See the new icon in the task bar (lower right of the screen) of the PC. (You can right-click the icon to bring up or close the Monitor screen as needed.)



F-3-100

6) See that the fields are copied. (Once it starts, you cannot "Cancel" the installation until all files have been copied.)

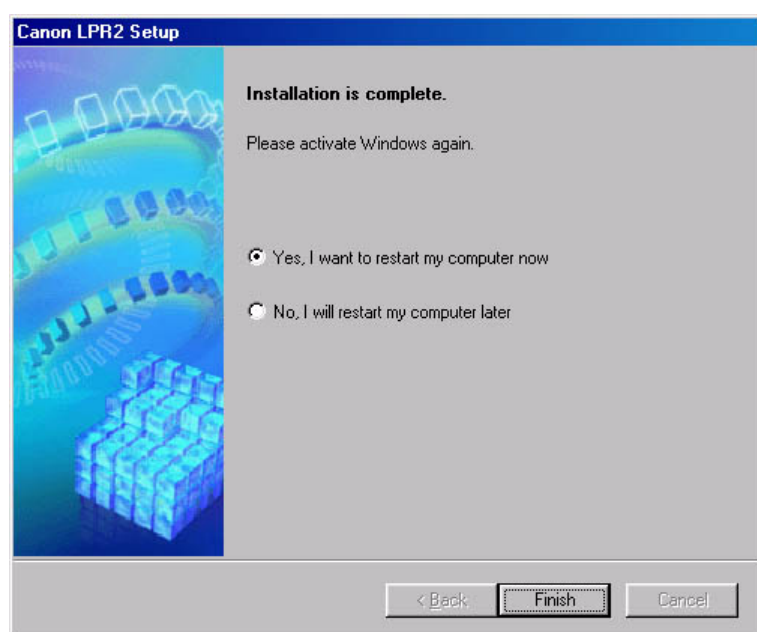


F-3-101

7) Click [Finish].

- If any other application is running, select [Yes, I want to restart my computer now], and click [Finish]. Reset the PC manually later after ending the application.

- If no other application is running, select [No, I will restart my computer later], and click [Finish]. The PC will restart.



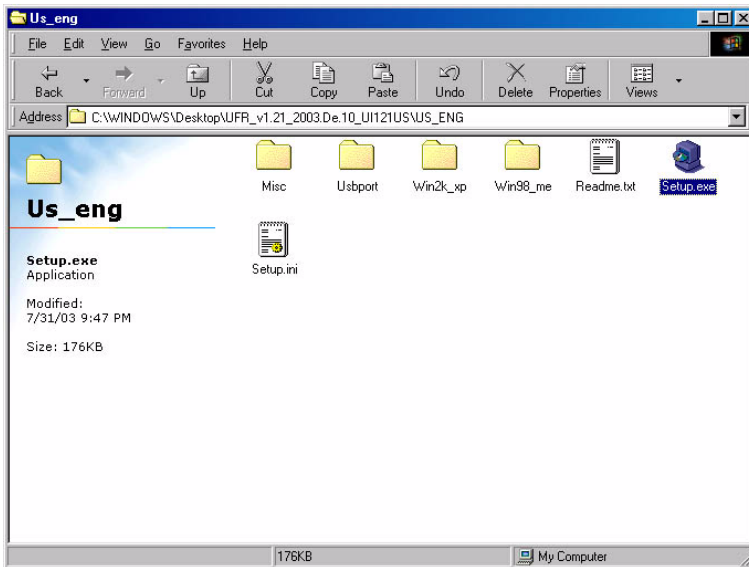
F-3-102

### 3.3.9 Installing Printer Drivers (LPR connection)

0006-2920

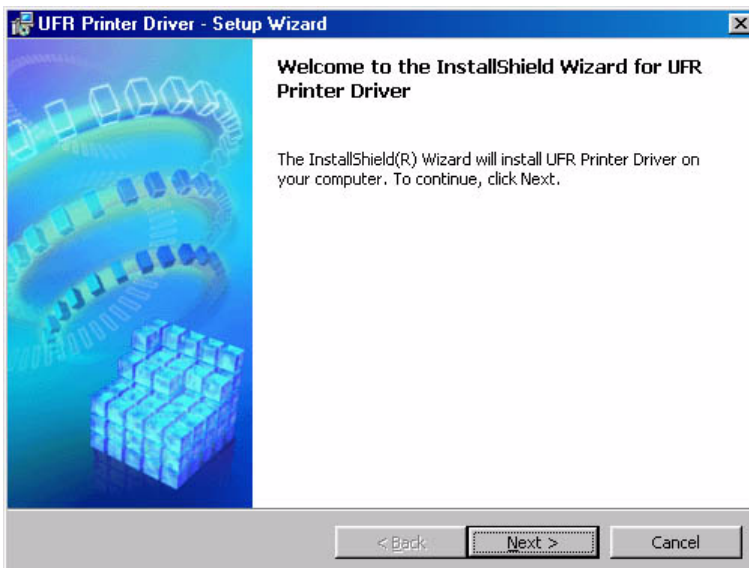
1) Insert the CD-ROM (User Software CD-ROM) in the drive of the PC. The setup screen will appear automatically. Click [Install Printer Drivers] on the screen.

- If the UFR CD-ROM Setup screen does not automatically appear after inserting the User Software CD-ROM in the drive, find the Setup executable, labeled [Setup] or [Setup.exe], and double-click the executable, from the CD-ROM.



F-3-103

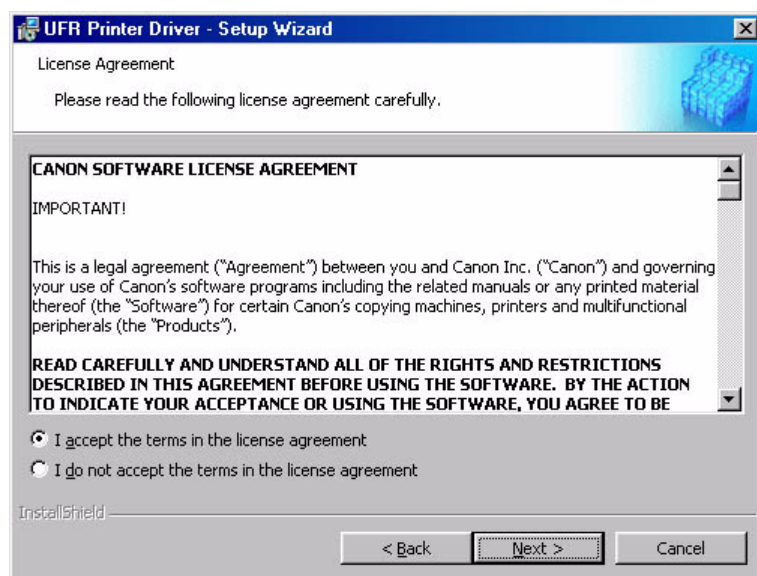
2) Click [Next].



F-3-104

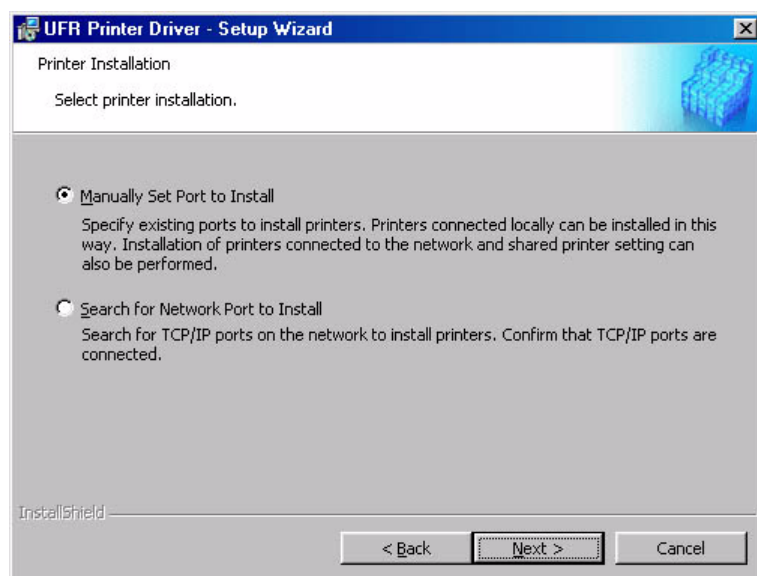


3) Select [I accept the terms in the license agreement ], and click [Next].



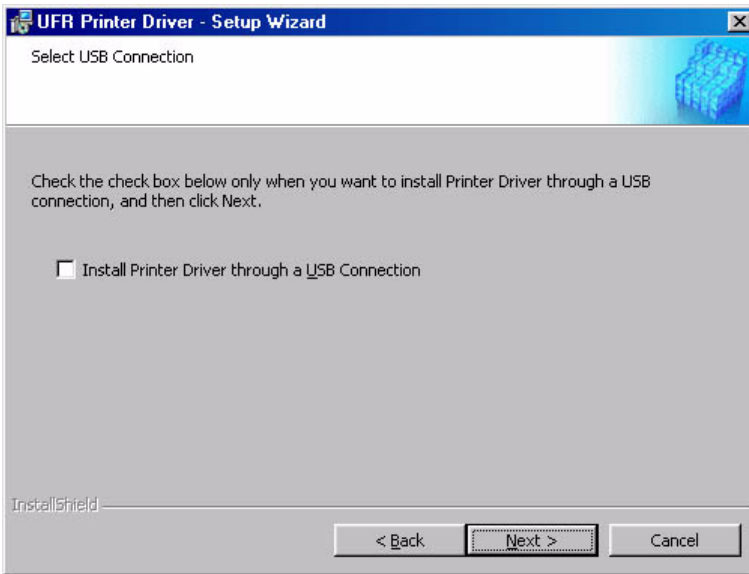
F-3-105

4) Select [Manually Set Port to Install], and click [Next].



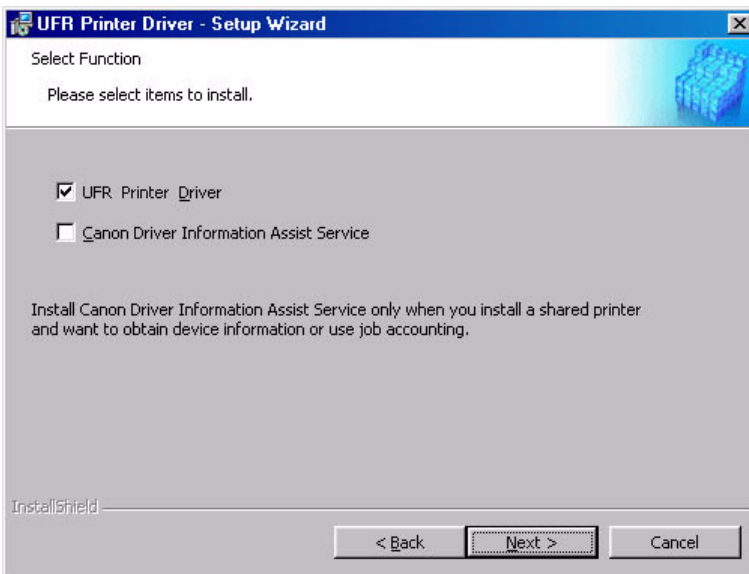
F-3-106

5) Check to see that the radio button is not checked (selected), and click [Next].



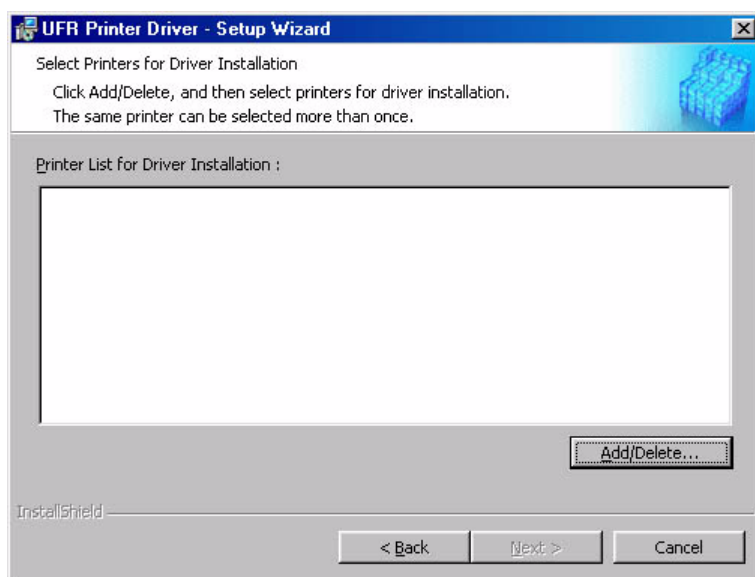
F-3-107

6) Check to see that [UFR Printer Driver] is checked (selected), and click [Next].



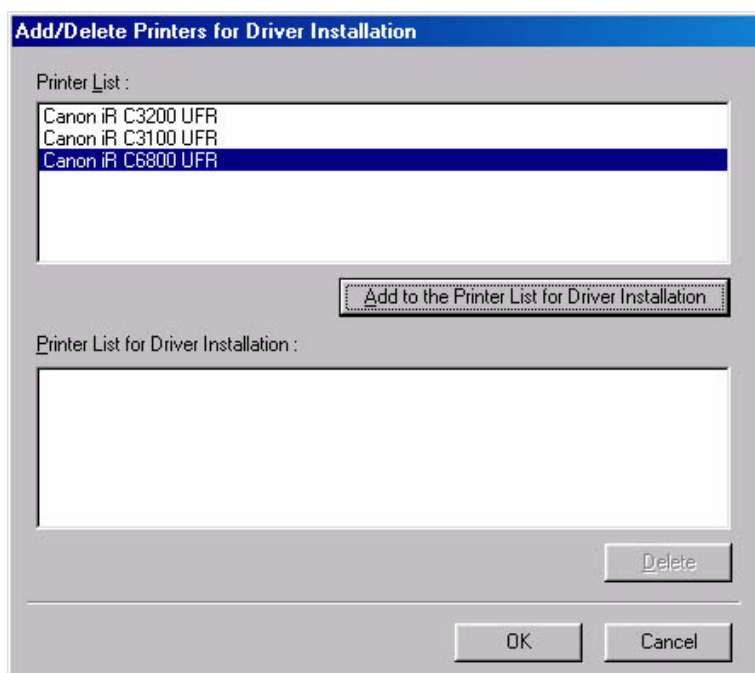
F-3-108

7) Click [Add /Delete].



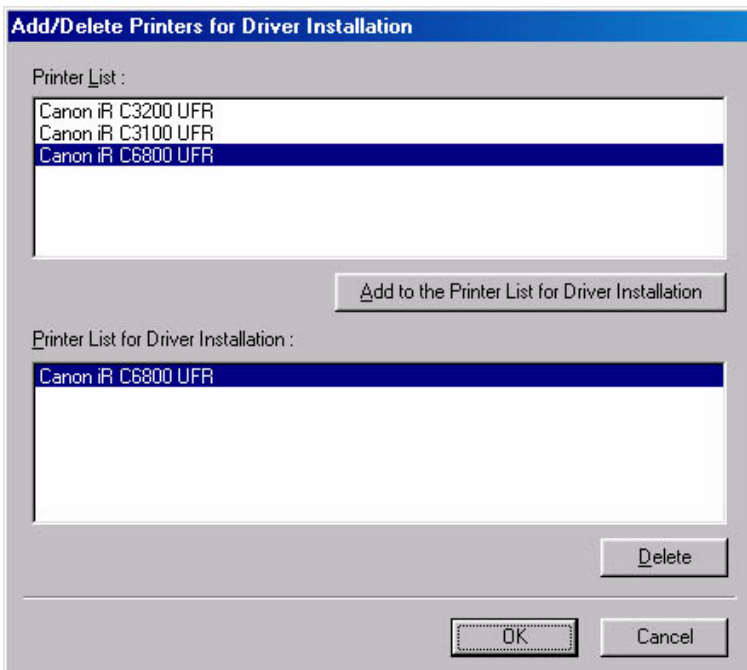
F-3-109

8) For [Printer List], select [Canon iR C6800 UFR], and click [Add to the Printer List for Driver Installation].



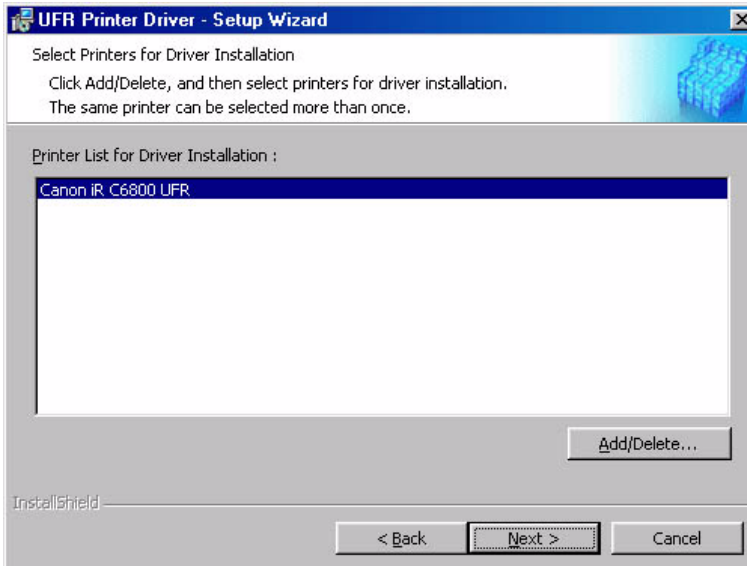
F-3-110

9) See that the printer you have selected (Canon iR C6800 UFR) has been added to the list of printers to install; then, click [OK].



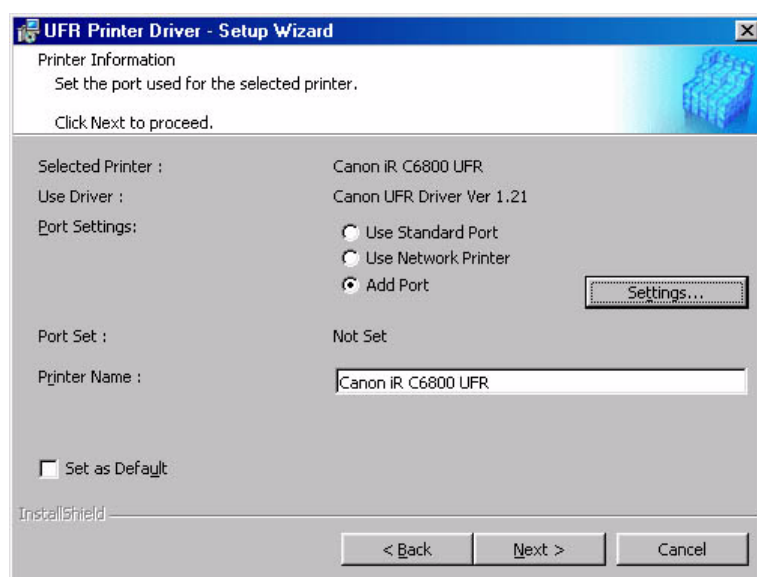
F-3-111

10) See that the printer you have selected (Canon iR C6800 UFR) is indicated in the list of printers to install; then, click [Next].



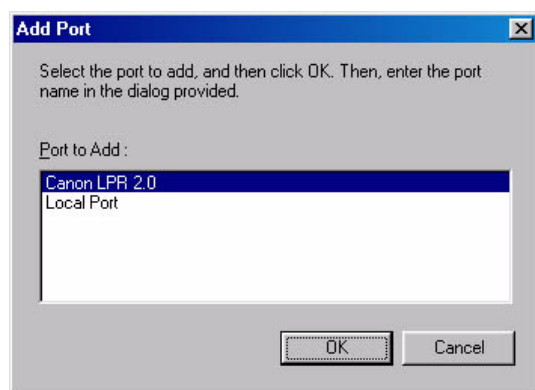
F-3-112

11) Select [Add Port], and click [Settings].



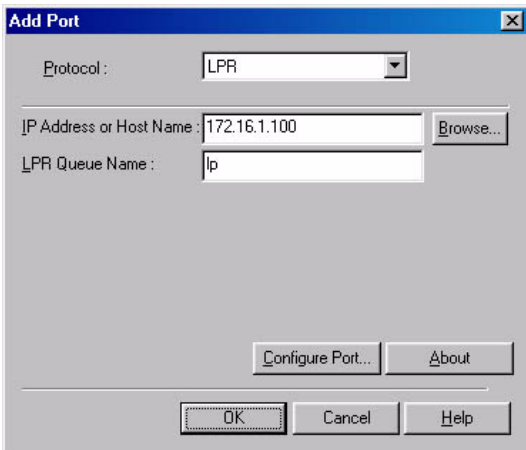
F-3-113

12) Select [Canon LPR 2.0], and click [OK].



F-3-114

13) Check to see that 'LPR' is indicated under [Protocol]. For [LPR Queue Name], 'lp' is automatically entered. Enter the setting you have made for the iR C6800 (or the information you have collected) for [IP Address or Host Name]; then, click [OK] to go to step 14).

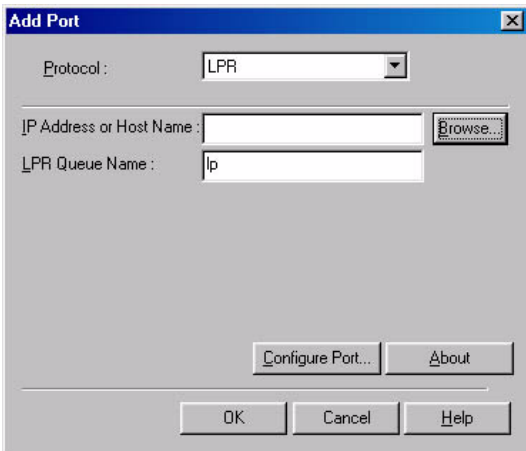


F-3-115

Note:

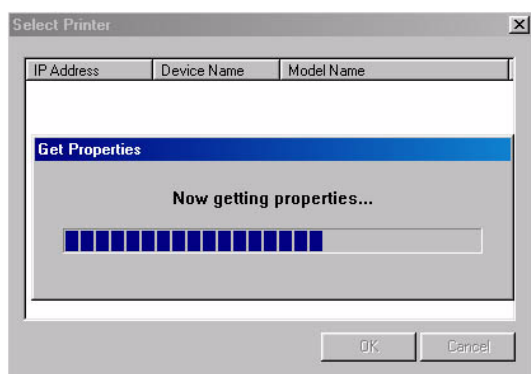
At this time, you need not directly type in [IP Address]; click [Browse] so that the appropriate information will automatically be collected from the device, including the IP address.

1. Check [Protocol]; then, click [Browse].



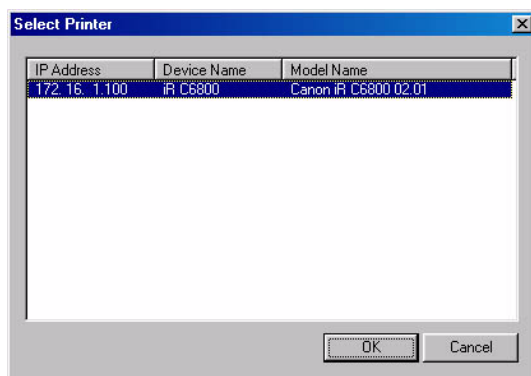
F-3-116

2. See that a screen appears indicating that information is being collected from the device.



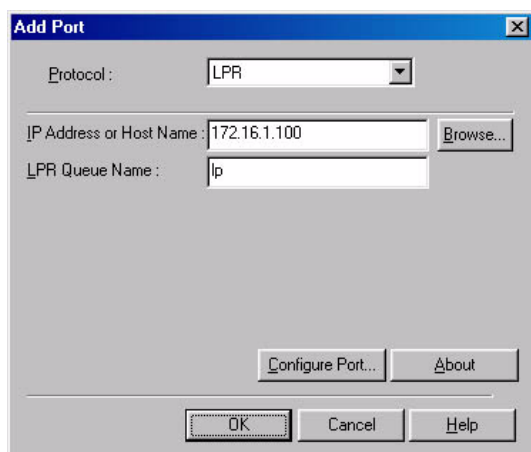
F-3-117

3. See that the information on the device (including IP Address, Device Name, Model Name) that has been collected is indicated. Click [OK].



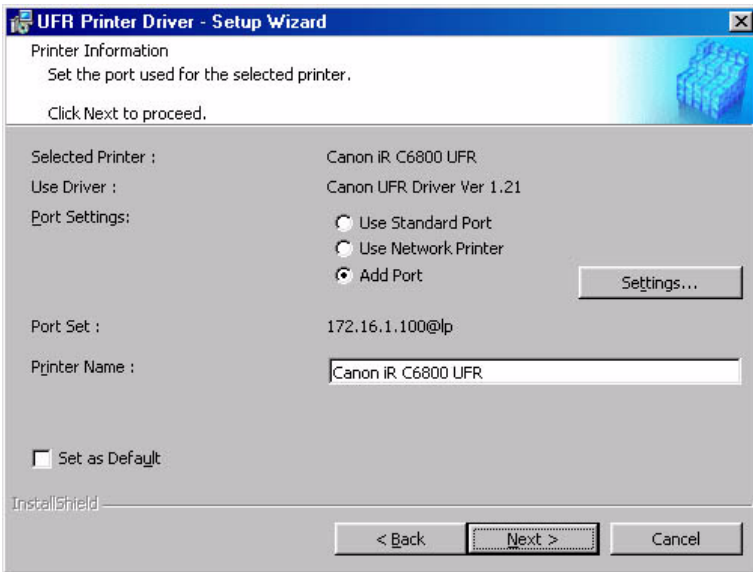
F-3-118

4. See that the IP Address or Host Name are indicated; then, click [OK] to go to step.



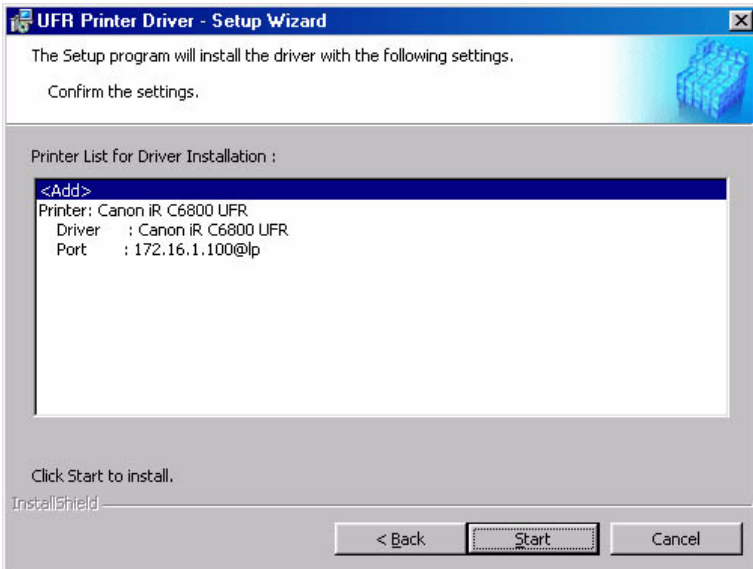
F-3-119

14) Check to see that the port has been changed to the port you have added; then, click [Next].



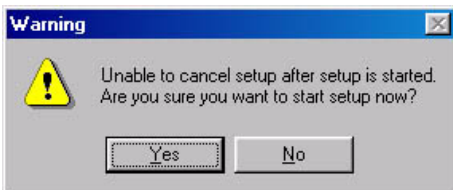
F-3-120

15) Check the settings; then, click [Start].



F-3-121

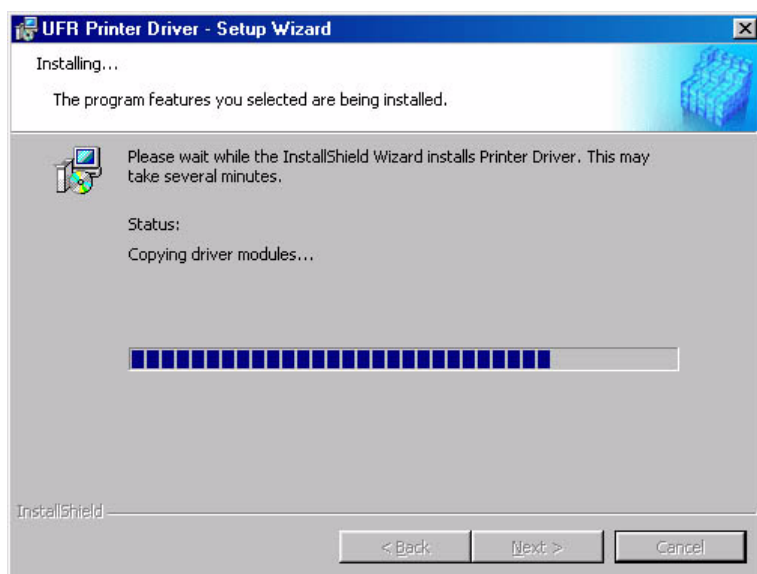
16) Click [Yes]; other wise, the installation will not start.



F-3-122



17) See the screen that has appeared in response to clicking [Yes] in step 16), i.e., after the start of installation.



F-3-123

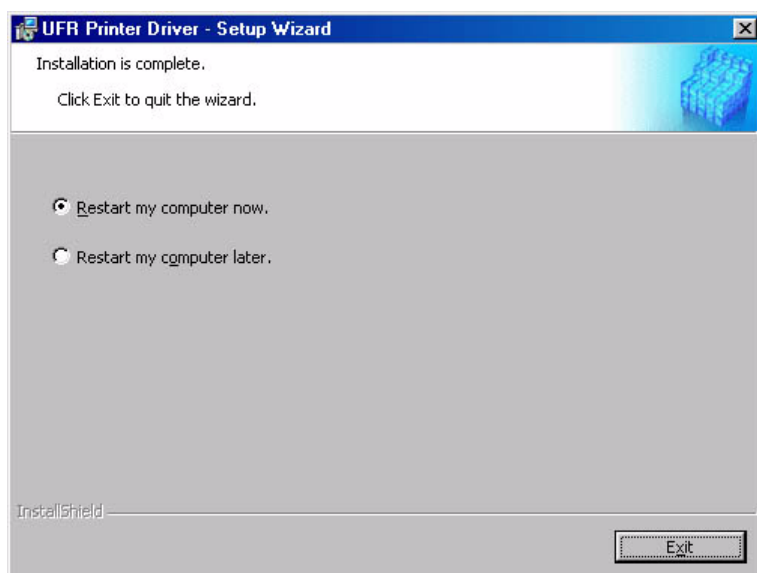
18) See the following screen:

**<if any other application is running>**

- select [Restart my computer now], and click [Exit]. Restart the PC manually later after ending the application.

**<if no other application is running>**

- select [Restart my computer later], and click [Exit]. The PC will restart.



F-3-124

### 3.3.10 Useful Operations

0006-2921

#### **Opening Printer Properties**

- Start>Settings>Printers>(right-click the printer you want to open)>Properties

#### **Printing from the PC**

- Start>Settings>Printers>(right-click the printer you want to open)>Properties>Test Print

#### **Selecting the Printer of First Choice**

- Start>Settings>Printers>(right-click the printer you want to open)>(check to see if the printer you want is selected)

Note:

If the printer is selected (identified by a check mark), leave it as it is.

Otherwise, select the printer so that it is identified by a check mark. Some applications, however, select the most recently used printer (e.g., Internet Explorer).

#### **Bring Up the Help Guide**

- Use the Help guide when you need detailed information about printer drivers.

Click the ? symbol in the upper right corner of the Windows screen; then, click to select the item for which you need information.

---

# Chapter 4 Maintenance

---



# Contents

4.1 Notes when service.....	4-1
4.1.1 Points to Note .....	4-1



## 4.1 Notes when service

---

### 4.1.1 Points to Note

0006-2702

When performing service on this kit in the field, note the following cautions and reference items.

- The Japanese postcard size, reply-paid postcard size and 4 sided postcard size are not defined paper sizes in Windows. Therefore, depending on the application software, you may not be able to select the appropriate paper size. With regard to paper size and margin size, depending on calculation errors in the system, application software and driver, or due to the paper feed accuracy of the printer, paper shrinkage or stretching caused by heat and or humidity, the actual sizes may be greater or smaller than the specified or desired size.
- Supported fonts can be used by adding to the Windows fonts.





Mar 18 2004

**Canon**